



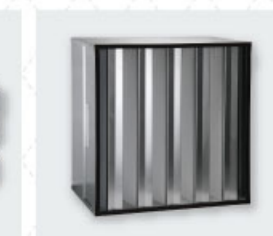
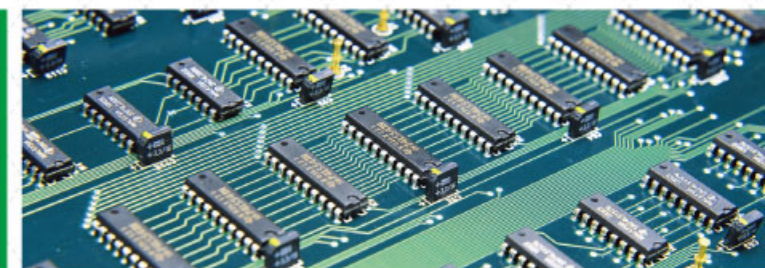
净化空气是我们的使命——禾益净化
 AIR CLEANING IS OUR RESPONSIBILITY —— HEFIL PURIFYING



上海禾益净化设备制造有限公司
 Shanghai HEFIL Purifying Equipment Manufacturing Co., Ltd.

地址: 上海市松江区九亭镇 久富开发区同利路95号
 电话: 021- 67632998 67632698
 传真: 021- 67698046
 E-mail: echo@hefil.com

Add: No.95 Tongli RD. Jiuting Town,
 Songjiang Dist, Shanghai, China
 Tel: 021- 67632998 67632698
 Fax: 021- 67698046
 http: //www.hefil.com



上海禾益净化设备制造有限公司
 Shanghai HEFIL Purifying Equipment Manufacturing Co., Ltd.

2012版 · 空气洁净系列



Creating a common profit together

公司简介 Company Introduction

>> > 价值创造 共建共赢

上海禾益净化设备制造有限公司创建于2001年，所拥有的禾益品牌享誉国内外。禾益致力于空气过滤器、化学过滤器、耐高温过滤器、自带风机过滤单元（FFU）及其他净化设备和洁净室产品的研发、制造、批发、零售及相关技术服务。禾益拥有最先进的全电脑控制的无隔板空气过滤器、有隔板空气过滤器和折叠式滤芯全自动生产线，具备完善的检测手段和无尘洁净生产车间。禾益生产的各类净化过滤产品广泛应用于半导体、核工业、电子技术、医药卫生、生物实验、食品饮料、机电设备、环境保护、化工、涂装、汽车制造等各个领域。禾益的质量管理体系已成功获得ISO 9001:2008认证；禾益的产品已通过SGS/RoHS认证。

禾益始终以尽善尽美的品质、售前售后服务致力于市场的开拓。禾益产品销量逐年提升，市场占有率不断提高，公司充分贯彻“以质量服务求生存、以价格品牌求市场”的经营方针，产品相继在北京、上海、江苏、浙江、安徽、山东、广西、四川、海南、重庆、湖北、广东、湖南、河南、河北、山西、陕西、云南、马来西亚、墨西哥、新加坡、澳大利亚、印度、加拿大、日本、美国、德国、俄罗斯……等等拥有自己的客户群体。

公司不仅重视销售市场的拓展，更重视企业员工素质的提高，以高素质的人力资源作为企业资本。公司特聘高级研发工程师、高级技术人才致力于产品的研发制造，重视企业员工的培训和教育，崇尚“创造、挑战”的企业精神，造就了一批朝气蓬勃、敬业创新的优秀制造团队。

随着公司的持续发展、队伍的日益壮大，公司将一如既往地坚持“以客户为中心”的理念，在夯实主业的基础上向多元化的发展迈进。公司将在激烈的市场竞争中迎难而上，以“创一流品牌、建一流企业”的品牌拓展战略，面对机遇与挑战，开创一片崭新的天地！

品质成就梦想
秉承口碑相传
禾益净化设备……

Shanghai HEFIL Purifying Equipment Manufacturing Co., Ltd. was founded in 2001, and it has a reputation of HEFIL brand at home and abroad. HEFIL is devoted to the development, manufacturing, wholesale and retail of air filters, chemical filters, high temperature filters, fan filter units, other cleaning equipments and clean room products, and it can also provide the services of related technology and equipments. HEFIL has the most advanced computer-controlled automatic production lines for the production of mini-pleat panel air filters, separator air filters and cartridge filters, also is provided with the perfect testing process and the dust-free workshops. All kinds of purification and filtration products made by HEFIL are widely used in semiconductor industry, electronics industry, nuclear industry, pharmaceuticals industry, biotic experiment, food and beverage industry, electromechanical device, environmental protection, chemical industry, painting industry, automobile industry and other fields. HEFIL has successfully obtained ISO 9001:2008 quality management system certification; HEFIL products have been certified by SGS/RoHS.

HEFIL always makes efforts in market development with the perfect quality, the good pre-sales and after-sales services. HEFIL fully implement the guideline in business — “Survival Depends on Quality and Service; Markets Rely on Price and Brand”. HEFIL product sales are improving year by year, and the product's market share continues to increase. One after another, in Beijing, Shanghai, Jiangsu, Zhejiang, Anhui, Shandong, Guangxi, Sichuan, Hainan, Chongqing, Hubei, Guangdong, Hunan, Henan, Hebei, Shanxi, Shaanxi, Yunnan as well as Malaysia, Mexico, Singapore, Australia, India, Canada, Japan, the United States, Germany, Russia and so on, HEFIL products have their own customer base.

Moreover, paying more attention to improve the quality of employees, the Company is taking high quality human resources as a business capital, and it has specialized in hiring senior research engineer, senior technical personnel dedicated to product development and manufacturing. Attaching importance to training and education of employees, and advocating “The More Challenging, the More Innovation” the spirit of enterprise, the Company has created an excellent manufacturing team, which is vibrant, dedicated and innovative.

With the Company's sustainable development and its team growing day by day; HEFIL will continue to adhere to the “Regard Customer as the Centre” concept, and consolidate the main basis to make great strides forward to a wide range of development. In the fierce market competition, the company will forge ahead, with “Creating First-class Brand, Building First-class Enterprise” the strategy of brand expansion in the face of opportunities and challenges, creating a brand new world!

Dream realization from quality
Reputation from approbation
HEFIL Purifying Equipment...

目录 Contents



跻身国际市场
创行业一流知名品牌

AMONG THE INTERNATIONAL MARKET
CREATING INDUSTRY-LEADING BRANDS

领导致辞	LEADER'S ORATION
经营与管理理念	BUSINESS AND MANAGEMENT CONCEPTS
品牌建设和品牌理念	BRAND BUILDING AND BRAND CONCEPT
荣誉证书	CERTIFICATE
空气过滤器	AIR FILTERS
■ HMU无隔板高效过滤器 (Mini-pleat ULPA Panel Filter)	01
■ HMH无隔板高效过滤器 (Mini-pleat HEPA Panel Filter)	02
■ HMV无隔板V型大风量过滤器 (V-bank High Capacity Filter)	03
■ HTH有隔板过滤器 (Separator Air Filter)	04
■ HBM化纤袋式过滤网 (Synthetic Pocket Filter)	05
■ HBG玻纤袋式过滤网 (Fiberglass Pocket Filter)	06
■ HBP不织布袋式过滤网 (Non-woven Pocket Filter)	07
■ HPM板式中效过滤网 (Medium-efficiency Panel Filter)	08
■ HPP板式初效过滤网 (Primary-efficiency Panel Filter)	09
■ HPF平板式初效过滤网 (Primary-efficiency Flat Filter)	10
■ HWN可洗式尼龙过滤网 (Nylon Washable Filter)	11
■ HWM可洗式全金属过滤网 (All Metal Washable Filter)	12
■ HGP不织布过滤网 (Non-woven Filter)	13
■ HCF顶篷过滤棉 (Ceiling Filter)	14
■ HGF玻璃纤维阻漆网 (Glass Fiber Paint Separator)	15
洁净室设备	CLEAN ROOM EQUIPMENTS
■ HDU抛弃型高效过滤箱 (Disposable HEPA Box)	16
■ HRU更换型高效过滤箱 (Replaceable HEPA Box)	17
■ HHD高效送风口 (HEPA Diffuser)	18
■ HFU风机过滤单元 (Fan Filter Unit (FFU))	19
■ HCU小型过滤单元 (Fan Clean Unit)	20
■ HAS风淋室 (Air Shower)	21
■ HBX传递窗 (Pass Box)	22
■ HLB洁净层流罩 (Clean Laminar Booth)	23
■ HCB洁净工作台 (Clean Bench)	24
■ HSP移动式自净器 (Traveling Air Self-purifier)	25
耐高温空气过滤器	TEMPERATURE RESISTANCE AIR FILTER
■ HTR耐高温过滤器 (Temperature Resistance Filter)	26
化学过滤器	CHEMICAL FILTERS
■ HACH V型活性炭过滤器 (V-bank Activated Charcoal Filter)	27
■ HACF平板式活性炭过滤器 (Activated Charcoal Flat Filter)	28
■ HACB箱型活性炭过滤器 (Activated Charcoal Filter Box)	29
■ HACT活性炭滤筒 (Activated Charcoal Filter Cylinder)	30
■ HACP折叠式活性炭过滤器 (Activated Charcoal Panel Filter)	31
■ HACD袋式活性炭过滤器 (Activated Charcoal Pocket Filter)	32
■ HACV密褶式活性炭过滤器 (Mini-pleat Activated Charcoal Filter)	33



领导致辞

LEADER'S ORATION

上海禾益净化设备制造有限公司是一个年轻、充满朝气活力的企业，秉承“厚德载物”的企业宗旨，坚持以诚取信，以信立业。我们将永远对客户、员工、社会履行一个企业应尽的全部义务……

我们倡导“以人为本、固本兴业”的企业文化，我们尽心为企业每位员工创造良好的工作环境。让每位员工的才华在这里得到施展，员工与企业协同效应，是我们衷心的祝愿！

我们树立坚定而清醒的品质观念。秉持专业精神，专注核心优势，追求卓越品质，精益求精，始终如一。以优质的产品、到位的服务不断提升产品品牌价值和企业的价值，是我们永远的追求！

我们信奉知恩相报的道德准则。滴水之恩、涌泉相报，事业的成功、企业的发展，离不开每个客户的支持，“始于客户要求、终于客户满意”是我们企业追求的核心。只要客户给我们一次服务的机会，我们将以实际行动还客户一份满意，是我们永恒的承诺！

机遇与挑战同在、光荣与梦想共存。我们对自己的前途与未来充满了信心和力量，我们将不负众望、继往开来、与时俱进、勇攀高峰，全力打造中国净化设备产品优质品牌——禾益 HEFIL。

希望您成为永远的合作伙伴，愿我们的事业共同进步！

Shanghai HEFIL Purifying Equipment Manufacturing Limited Company is a youthful, energetic enterprise. Following the "Great virtue can carry all the things" enterprise principle, we firmly believe that only the honest can be trusted, only the faithful can accomplish great undertaking. We will always fulfill all the obligations of an enterprise due to customers, employees and the communities...

We advocate the "In people-oriented basis for industrial development" enterprise culture, and wholeheartedly create a good working environment for the each employee. Let each employee's talent to be cast here. Employees and enterprise to make a synergistic effect, is our sincere best wishes.

We have established a firm and clear concept of the product quality. Adhering to the professionalism and focusing on the core advantage, we consistently pursue the excellent quality to always endeavor to do still better. We will provide the high quality products and effectual services to continually enhance the brand value and the enterprise value that is our eternal pursuit.

We believe in the moral code that is remembering the gratitude and trying to repay it. "A drop of benefit should be double rewarded." The career success and business development of us is inseparable from the support of each customer. "Beginning with customer requirements and finishing with customer satisfaction" is the core of our business pursuing. As long as you give us an opportunity of the service, we will give you a satisfactory action. This is our eternal promise!

Opportunities come from challenges and the glory coexists with the dream. We have been full of confidence and strength with our prospects and future. We will live up to popular confidence, to carry on the past and open a way for future, to advance with the times, and to scale new heights. We will do our best to build the quality brand of purifying equipments in China — HEFIL.

We hope that you will always be our partner. Let our causes to make progress together!

经营与管理理念

BUSINESS AND MANAGEMENT CONCEPTS

- ◎ “认真做人，努力做事”是禾益人的行为准则。
- ◎ “以信誉生命、以产品为先导、以质量为依托、以服务为保证、以价格为杠杆、以客户为中心，艰苦创业、勤勉敬业、廉洁自律、励精图治”是禾益的经营与管理理念。
- ◎ “创造价值、服务大众”是禾益的企业宗旨。
- ◎ 禾益在激烈的市场搏击中“以创造而挑战，为挑战而创造”积极打造企业强势品牌、拓宽和升级产业链。
- ◎ 禾益秉承“专业化、规范化、市场化”的战略指导思想；

★专业化：

具备高品质的禾益净化产品与精益求精的专业化制造团队，为您净化空气保驾护航。无论您远在天边，我们的服务近在眼前；我们将为您提供品质、效率、寿命的协同效应……

★规范化：

生产环节规范化、品质检验规范化、市场经营规范化、企业管理规范化、客户服务规范化。

★市场化：

主动适应外部环境的变化，用市场引导发展；效率优先、内部公平竞争，实行激励与约束相结合的机制，优胜劣汰。

- ◎ 专业化是公司的立足之本，是发展的核心；规范化是公司长远发展的根基；市场化是推动公司发展的原动力。
- ◎ "Behaving modestly, working conscientiously", that is the code of HEFIL person's conduct.
- ◎ "The reputation as life; the customer as center; the service as guarantee; the quality as backing; the product as a guide; the price as a lever, we work hard to start our enterprise, and will be diligent in our careers. We are incorruptible and self-disciplined to make great efforts to build a strong state." That is HEFIL's business and management concepts.
- ◎ "Creating value and serving the general public", that is HEFIL's enterprise objective.
- ◎ "The More Challenging, the More Innovation", in the keen market competition, HEFIL will actively build a strong corporate brand, to expand and upgrade the industrial chain.
- ◎ HEFIL stand for the strategic guidelines of specialization, standardization and marketization:

★ Specialization:

We have the high quality purifying products of HEFIL and the excellent and professional manufacturing team, to escort you to clean the air. Whether you are far away, there are our services in sight. We will provide you with the synergy of quality, efficiency and life...

★ Standardization:

Production processes must be standardized, quality inspection must be standardized, market operators must be standardized, enterprise management must be standardized and customer service must be standardized.

★ Marketization:

We must take the initiative to adapt to changes in the external environment, and take the market to guide development. We should put the efficiency in the first place, implementing the internal fair competition and the mechanisms of incentive in combination with restraint. The fittest is survival.

- ◎ Specialization is the base of the company and the core of our development. Standardization is the foundation of the company long-term development. Marketization is the impulsion to promote the company development.



品牌建设和品牌理念

BRAND BUILDING AND BRAND CONCEPT

- ◎ 禾益品牌理念：完美匹配、精诚合作、尖端品质、效率最优；
- ◎ 我们将理想化为实际行动，为客户和大众服务；
- ◎ 我们满足和超越客户的希望；
- ◎ 我们追求尖端品质，实现洁净最大化；
- ◎ 我们任人唯贤，以学习进步、提供高质产品和优质服务为使命；
- ◎ 我们推崇业绩文化，培育禾益品牌，拓展净化市场，注重可持续发展；
- ◎ 禾益坚持“稳固规范、长远发展”的原则，彻底摒弃急功近利倾向，树立“立足长远发展、谋求持续盈利”的价值取向；
- ◎ 始终把合规经营、稳固运作放在重要位置上，致力于建设完善的内控机制与内控制度，规范业务流程，规范企业管理，加强内部风险防范；
- ◎ 正确处理稳固经营、长远发展与充分把握市场之间的关系。
- ◎ 在成就梦想的道路上，禾益从小到大、从大到强、从强到优……

从产品的丰富多元到服务的延伸，禾益正打造一流的现代企业，逐鹿中国、放眼全球……

- ◎ HEFIL brand concept: the perfect match, the sincere cooperation, the sophisticated quality, the optimal efficiency.
- ◎ We must bring our ideal into action for the customers and public services.
- ◎ We meet and exceed the hopes of customers.
- ◎ We pursue the sophisticated quality to achieve the optimum purification.
- ◎ We appoint people on their merit. Learning advanced technology, providing high quality products and excellent services is our mission.
- ◎ We value the performance culture, cultivate HEFIL brand, expand purification products market, and attach importance to the sustainable development.
- ◎ HEFIL adhere to the "stable standard, long-term development" principle, to completely abandon the utilitarian tendency and establish "based on long-term development, to seek sustainable profitability" values.
- ◎ We always place the compliance management and stable operation in an important position. We must focus on building a perfect internal control mechanisms and system, to standardize the business process and the enterprise management and strengthen internal risk prevention.
- ◎ We should handle the relationship between the stable operation, long-term development and the full grasp of market.
- ◎ On the road of dream becoming a reality, let HEFIL from small to big, from big to strong and from strong to excellent...

Whether enriching and diversifying products or extending services HEFIL is creating a first-class modern enterprise, competing in China, looking at the world...

荣誉证书

CERTIFICATE



性能特点 Features

- ◆ 对 $\geq 0.3\mu\text{m}$ 颗粒的过滤效率在99.9995%以上
- ◆ 用电脑控制的全自动折叠机系统进行喷胶折叠, 折叠高度范围可在22~96mm之间无级调节
- ◆ 专用超细玻璃纤维滤纸作为滤材
- ◆ 每台滤器经严格检测
- ◆ 采用国际标准尺寸规格
- ◆ F型为刀口型, 用于液槽密封
- ◆ Trapping 99.9995% or higher of $0.3\mu\text{m}$ particles
- ◆ Adopt computer-controlled automatic production line for manufacturing, the crest height of folding filter material can be regulated steplessly between 22~96 mm
- ◆ Using special ultra-fine glass fiber filter paper as the filter material
- ◆ Each filter is through rigorous testing
- ◆ Adopt international standards sizes
- ◆ "F" series with a knife-edge frame is applied to gelatin sealing



应用 Application

- ◆ 主要用于电子、医药行业, 无尘室、层流设备等要求超洁净度的场合
- ◆ Suitable for electronics, pharmaceutical industry, clean room, laminar flow devices, and the occasions required ultra-high cleanliness.

常用规格 Common Specifications

型号 Model	外形尺寸 Dimensions	过滤面积 Media Area (m^2)	额定风量 Rated Air Flow (m^3/h)	初始压降 Initial Pressure Drop (Pa)
	W x H x D (mm)			
HMU610/03-70	305 x 305 x 70	2.7	250	≤250
HMU610/05-70	305 x 610 x 70	5.5	500	
HMU610/10-70	610 x 610 x 70	11.3	1000	
HMU610/15-70	915 x 610 x 70	17.0	1500	
HMU610/20-70	1220 x 610 x 70	22.7	2000	
HMU610/03-90	305 x 305 x 90	3.7	320	
HMU610/05-90	305 x 610 x 90	7.5	650	
HMU610/10-90	610 x 610 x 90	15.4	1300	
HMU610/15-90	915 x 610 x 90	23.2	2000	
HMU610/20-90	1220 x 610 x 90	31.1	2600	
HMU610/03-F	305 x 305 x 135	3.6	320	
HMU610/05-F	305 x 610 x 135	7.4	650	
HMU610/10-F	610 x 610 x 135	14.7	1300	
HMU610/15-F	915 x 610 x 135	22.0	2000	
HMU610/20-F	1220 x 610 x 135	29.4	2600	

注: 1、若遇规格、结构变更, 以本公司提供的最新数据为准; 有关更新内容请关注本公司网站。
2、本公司接受非表上规格过滤器产品的订货。
Note: 1. In case of specifications, structural changes, HEFIL will provide up-to-date data on website: www.hefil.com.
2. HEFIL makes various other models of HMU filter not listed the above table. Please consult with us if you need.

性能特点 Features

- ◆ 对 $\geq 0.3\mu\text{m}$ 颗粒的过滤效率在99.97%以上
- ◆ 用电脑控制的全自动折叠机系统进行喷胶折叠, 折叠高度范围可在22~96mm之间无级调节
- ◆ 专用玻璃纤维滤纸作为滤材
- ◆ 每台滤器经严格检测
- ◆ 采用国际标准尺寸规格
- ◆ Trapping 99.97% or higher of $0.3\mu\text{m}$ particles
- ◆ Adopt computer-controlled automatic production line for manufacturing, the crest height of folding filter material can be regulated setplessly between 22~96mm
- ◆ Using special glass fiber filter paper as the filter material
- ◆ Each filter is through rigorous testing
- ◆ Adopt international standards sizes



应用 Application

- ◆ 主要用于电子、医药行业和医院等要求高洁净度的场合的终端过滤
- ◆ Suitable for electronics, pharmaceutical industry, hospital, and the occasions required the high cleanliness terminal filtration.

常用规格 Common Specifications

型号 Model	外形尺寸 Dimensions	过滤面积 Media Area (m^2)	额定风量 Rated Air Flow (m^3/h)	额定风速 Face Velocity (m/s)	初始压降 Initial Pressure Drop (Pa)
	W x H x D (mm)				
HMH610/03-50	305 x 305 x 50	1.6	150	0.5	≤190
HMH610/05-50	305 x 610 x 50	3.3	300		
HMH610/10-50	610 x 610 x 50	6.7	600		
HMH610/15-50	915 x 610 x 50	10.1	900		
HMH610/20-50	1220 x 610 x 50	13.5	1200		
HMH610/03-70	305 x 305 x 70	2.7	250	0.75	
HMH610/05-70	305 x 610 x 70	5.5	500		
HMH610/10-70	610 x 610 x 70	11.3	1000		
HMH610/15-70	915 x 610 x 70	17.0	1500		
HMH610/20-70	1220 x 610 x 70	22.7	2000		
HMH610/03-90	305 x 305 x 90	3.7	320	1.0	
HMH610/05-90	305 x 610 x 90	7.5	650		
HMH610/10-90	610 x 610 x 90	15.4	1300		
HMH610/15-90	915 x 610 x 90	23.2	2000		
HMH610/20-90	1220 x 610 x 90	31.1	2600		

注: 1、若遇规格、结构变更, 以本公司提供的最新数据为准; 有关更新内容请关注本公司网站。
2、本公司接受非表上规格过滤器产品的订货。
Note: 1. In case of specifications, structural changes, HEFIL will provide up-to-date data on website: www.hefil.com.
2. HEFIL makes various other models of HMH filter not listed the above table. Please consult with us if you need.

性能特点 Features

- ◆ 过滤效率有高效、亚高效和中效三种
 - ◆ 无隔板芯片采用电脑控制的全自动折叠机系统进行喷胶折叠
 - ◆ 专用玻璃纤维滤纸或聚丙烯作为滤材
 - ◆ 框体采用镀锌钢板或塑料
 - ◆ 每台过滤器经严格检测
 - ◆ 采用国际标准尺寸规格
- ◆ Provide three classifications of filter efficiency: high, sub-high and medium
 - ◆ Adopt computer-controlled automatic production line for manufacture of mini pleat filter material
 - ◆ Using special glass fiber filter paper as the filter material
 - ◆ Frame can be made of galvanized steel sheet, stainless steel sheet or ABS plastic
 - ◆ Each filter is through rigorous testing
 - ◆ Adopt international standards sizes



应用 Application

- ◆ 主要用于大风量的空调净化设备，如空调箱系统的中级过滤和终端过滤
- ◆ Suitable for air conditioning and air cleaning equipment of high quantity ventilation, often used to medium filter and terminal filter in air-conditioning systems.

常用规格 Common Specifications

型号 Model	外形尺寸 Dimensions W × H × D (mm)	结构 Structural Style	框体 Frame	过滤面积 Media Area (m ²)	额定风量 Rated Air Flow (m ³ /h)	初始压降 Initial Pressure Drop (Pa)		
						F8	H10	H13
HMV1212-2VF25	287 × 287 × 292	287 单凸Header	2V塑框 /金属框	4.2	800	110	180	260
HMV1220-2VF25	287 × 490 × 292			7.7	1200			
HMV1224-2VF25	287 × 592 × 292			25mm	9.4			
HMV2012-3VF25	490 × 287 × 292	490 单凸Header	3V塑框 /金属框	6.4	1100			
HMV2020-3VF25	490 × 490 × 292			11.6	1900			
HMV2024-3VF25	490 × 592 × 292			25mm	14.4			
HMV2412-3VF20/25	592 × 287 × 292	592 单凸Header 25/20mm	3V塑框 /金属框	6.4	1100			
HMV2420-3VF20/25	592 × 490 × 292			11.6	1900			
HMV2424-3VF20/25	592 × 592 × 292			14.4	2400			
HMV2412-4VF20/25	592 × 287 × 292			4V塑框 /金属框	8.4			
HMV2420-4VF20/25	592 × 490 × 292				15.4	2500		
HMV2424-4VF20/25	592 × 592 × 292				18.8	3200		
HMV2412-5VF25	592 × 287 × 292	592 单凸Header 25mm	5V塑框 /金属框	10.5	1800			
HMV2420-5VF25	592 × 490 × 292			19.0	3200			
HMV2424-5VF25	592 × 592 × 292			23.5	3900			
HMV1212-2V	305 × 305 × 292	610 箱型Box	2V塑框/金属	5.4	850			
HMV1224-2V	305 × 610 × 292			10.8	1700			
HMV2412-4V	610 × 305 × 292		4V金属框 Metal	11	1700			
HMV2424-4V	610 × 610 × 292			22	3400			
HMV2412-5V	610 × 305 × 292		5V塑框/金属 Plastic/Metal	13.5	2100			
HMV2424-5V	610 × 610 × 292			27	4200			
HMV2412-6V	610 × 305 × 292			6V金属框 Metal	16	2500		
HMV2424-6V	610 × 610 × 292				32	5000		

注：1、若遇规格、结构变更，以本公司提供的最新数据为准；有关更新内容请关注本公司网站。
2、本公司接受非表上规格过滤器产品的订货。
Note: 1. In case of specifications, structural changes, HEFIL will provide up-to-date data on website: www.hefil.com.
2. HEFIL makes various other models of HMV filter not listed the above table. Please consult with us if you need.

性能特点 Features

- ◆ 高效H13过滤效率：对≥0.3μm 颗粒的过滤效率在99.99%以上
 - ◆ 亚高效H10过滤效率：对≥0.5μm 颗粒的过滤效率在95%以上
 - ◆ 中效F8过滤效率：对≥1.0μm 颗粒的过滤效率在80%以上
 - ◆ 专用折叠设备进行折叠
 - ◆ 特制玻璃纤维滤纸作为滤材
 - ◆ 特种铝箔或纸间隔片
 - ◆ 每台过滤器经严格检测
 - ◆ 有木质、铝合金、钢板及不锈钢外框
- ◆ High eff. H13: trapping 99.99% or higher of 0.3μm particles
 - ◆ Sub-high eff. H10: trapping 95% or higher of 0.3μm particles
 - ◆ Medium eff. F8: trapping 80% or higher of 1.0μm particles
 - ◆ Adopt special folding machine for manufacturing
 - ◆ Using special glass fiber filter paper as the filter material
 - ◆ Using special aluminum foil or offset paper as separator
 - ◆ Each filter is through rigorous testing
 - ◆ Frame can be made of wood, aluminum alloy, galvanized steel sheet or stainless steel sheet



应用 Application

- ◆ 主要用于电子、生物制药行业及医院等需要高洁净度的场合
- ◆ Suitable for electronics, biopharmaceutical industry, hospital, and the occasions required the high cleanliness terminal filtration.

常用规格 Common Specifications

型号 Model	外形尺寸 Dimensions W × H × D (mm)	过滤面积 Media Area (m ²)		额定风量 Rated Air Flow (m ³ /h)		初始压降 Initial Pressure Drop(Pa)		
		标准 Standard	高风量 High Capacity	标准 Standard	高风量 High Capacity	F8	F10	F13
HTH230	230 × 230 × 110	0.8	1.4	110	180	≤85	≤175	≤235
HTH320	320 × 320 × 220	4.1	6.1	350	525			
HTH484/10	484 × 484 × 220	9.6	14.4	1000	1500			
HTH484/15	726 × 484 × 220	14.6	21.9	1500	2250			
HTH484/20	968 × 484 × 220	19.5	29.2	2000	3000			
HTH630/05	315 × 630 × 220	8.1	12.1	750	1200			
HTH630/10	630 × 630 × 220	16.5	24.7	1500	2250			
HTH630/15	945 × 630 × 220	24.9	37.3	2200	3300			
HTH630/20	1260 × 630 × 220	33.4	50.1	3000	4500			
HTH610/03	305 × 305 × 150	2.4	3.6	250	375			
HTH610/05	305 × 610 × 150	5.0	7.5	500	750			
HTH610/10	610 × 610 × 150	10.2	15.3	1000	1500			
HTH610/15	915 × 610 × 150	15.4	23.1	1500	2250			
HTH610/20	1220 × 610 × 150	20.6	30.9	2000	3000			
HTH610/05X	305 × 610 × 292	10.1	15.1	1000	1500			
HTH610/10X	610 × 610 × 292	20.9	31.3	2000	3000			

注：1、若遇规格、结构变更，以本公司提供的最新数据为准；有关更新内容请关注本公司网站。
2、本公司接受非表上规格过滤器产品的订货。
Note: 1. In case of specifications, structural changes, HEFIL will provide up-to-date data on website: www.hefil.com.
2. HEFIL makes various other models of HTH filter not listed the above table. Please consult with us if you need.

性能特点 Features

- ◆ 过滤效率等级G4~F8可供选择
- ◆ 采用特制的高通量低阻力复合化学纤维布作为滤材，容尘量大
- ◆ 可带镀锌框、铝合金框、塑框或不锈钢框
- ◆ Filtration efficiency rating G4~F8 is available for selection
- ◆ Using special low-resistance and high-throughput composite fabric of synthetic fiber as the filter material, with a high dust containing capacity
- ◆ The filter can be with the frame made up of aluminum alloy, galvanized steel, stainless steel or plastic



应用 Application

- ◆ 主要用于电子、生物制药、机械仪表和石化轻工等行业的一般空气净化系统
- ◆ Suitable for the electronics, bio-pharmaceutical, machinery, instrumentation, petrochemical and light industry as general air purification systems.

常用规格 Common Specifications

型号 Model	外形尺寸 Dimensions W × H × D (mm)	袋数 No. of Pockets	过滤面积 Media Area (m ²)	各效率规格的初始压降@额定风量 Initial Pressure Drop (Pa) @ Rated Air Flow (m ³ /h)				
				G4(30-35%)	F5(40-45%)	F6(60-65%)	F7(80-85%)	F8(90-95%)
HBM-24 × 24 × 24-8P	592 × 592 × 600	8	6.5	27@3400	38@3400	58@3400	68@3400	98@3400
HBM-24 × 24 × 22-8P	592 × 592 × 558		6.1	29@3400	41@3400	62@3400	73@3400	104@3400
HBM-24 × 24 × 18-8P	592 × 592 × 450		4.9	36@3400	51@3400	77@3400	91@3400	98@2550
HBM-24 × 24 × 15-8P	592 × 592 × 381		4.2	42@3400	59@3400	90@3400	106@3400	114@2550
HBM-24 × 24 × 12-8P	592 × 592 × 300		3.4	52@3400	73@3400	111@3400	98@2550	141@2550
HBM-24 × 24 × 24-6P	592 × 592 × 600	6	5.0	35@3400	50@3400	76@3400	89@3400	96@2550
HBM-24 × 24 × 22-6P	592 × 592 × 558		4.7	38@3400	53@3400	81@3400	94@3400	102@2550
HBM-24 × 24 × 18-6P	592 × 592 × 450		3.8	47@3400	65@3400	100@3400	88@2550	126@2550
HBM-24 × 24 × 15-6P	592 × 592 × 381		3.3	54@3400	75@3400	86@2550	101@2550	145@2550
HBM-24 × 24 × 12-6P	592 × 592 × 300		2.6	68@3400	95@3400	109@2550	85@1700	123@1700
HBM-20 × 24 × 24-6P	490 × 592 × 600	6	4.9	36@3400	51@3400	77@3400	90@3400	98@2550
HBM-20 × 24 × 22-6P	490 × 592 × 558		4.6	38@3400	54@3400	82@3400	96@3400	104@2550
HBM-20 × 24 × 18-6P	490 × 592 × 450		3.7	48@3400	67@3400	102@3400	90@2550	130@2550
HBM-20 × 24 × 15-6P	490 × 592 × 381		3.2	55@3400	78@3400	89@2550	104@2550	150@2550
HBM-20 × 24 × 12-6P	490 × 592 × 300		2.6	68@3400	95@3400	109@2550	85@1700	123@1700
HBM-20 × 20 × 24-6P	490 × 490 × 600	5	3.5	38@2550	53@2550	81@2550	95@2550	137@2550
HBM-20 × 20 × 22-6P	490 × 490 × 558		3.3	40@2550	57@2550	86@2550	101@2550	148@2550
HBM-20 × 20 × 18-6P	490 × 490 × 450		2.7	49@2550	67@2550	105@2550	82@1700	118@1700
HBM-20 × 20 × 15-6P	490 × 490 × 381		2.3	58@2550	81@2550	82@1700	96@1700	139@1700
HBM-20 × 20 × 12-6P	490 × 490 × 300		1.8	74@2550	67@1700	105@1700	123@1700	89@850
HBM-12 × 24 × 24-4P	287 × 592 × 600	4	3.2	27@1700	38@1700	58@1700	68@1700	98@1700
HBM-12 × 24 × 22-4P	287 × 592 × 558		3.0	29@1700	41@1700	62@1700	73@1700	104@1700
HBM-12 × 24 × 18-4P	287 × 592 × 450		2.4	36@1700	51@1700	77@1700	91@1700	98@1275
HBM-12 × 24 × 15-4P	287 × 592 × 381		2.1	42@1700	59@1700	90@1700	106@1700	114@1275
HBM-12 × 24 × 12-4P	287 × 592 × 300		1.7	52@1700	73@1700	111@1700	98@1275	141@1275
HBM-12 × 24 × 24-3P	287 × 592 × 600	3	2.5	35@1700	50@1700	76@1700	89@1700	96@1275
HBM-12 × 24 × 22-3P	287 × 592 × 558		2.3	38@1700	53@1700	81@1700	94@1700	102@1275
HBM-12 × 24 × 18-3P	287 × 592 × 450		1.9	47@1700	65@1700	100@1700	88@1275	126@1275
HBM-12 × 24 × 15-3P	287 × 592 × 381		1.6	54@1700	75@1700	86@1275	91@1275	145@1275
HBM-12 × 24 × 12-3P	287 × 592 × 300		1.3	68@1700	95@1700	109@1275	85@850	123@850

注：1、若遇规格、结构变更，以本公司提供的最新数据为准；有关更新内容请关注本公司网站。
2、本公司接受非表上规格过滤网产品的订货。
Note: 1. In case of specifications, structural changes, HEFIL will provide up-to-date data on website: www.hefil.com.
2. HEFIL makes various other models of HBM filter not listed the above table. Please consult with us if you need.

性能特点 Features

- ◆ 过滤效率等级F5~F8可供选择
- ◆ 滤料以极细致的特殊玻璃纤维制成，以无纺布强化，容尘量大
- ◆ 防火等级：UL-900 Class 2
- ◆ 可带镀锌框、铝合金框或不锈钢框
- ◆ Filtration efficiency rating F5~F8 is available for selection
- ◆ Filter material is made of extremely detailed special glass fiber, enhanced with non-woven composite. It has a high dust containing capacity
- ◆ Fire-protection Rating: UL-900 Class 2
- ◆ The filter can be with the frame made up of aluminum alloy, galvanized steel or stainless steel



应用 Application

- ◆ 主要用于电子、生物制药、机械仪表和石化轻工等行业的一般空气净化系统
- ◆ Suitable for the electronics, bio-pharmaceutical, machinery, instrumentation, petrochemical and light industry as general air purification systems.

常用规格 Common Specifications

型号 Model	外形尺寸 Dimensions W × H × D (mm)	袋数 No. of Pockets	过滤面积 Media Area (m ²)	各效率规格的初始压降@额定风量 Initial Pressure Drop (Pa) @ Rated Air Flow (m ³ /h)			
				F5(40-45%)	F6(60-65%)	F7(80-85%)	F8(90-95%)
HBG-24 × 24 × 36-10P	592 × 592 × 915	10	12.0	-	87@5100	110@4250	125@4250
HBG-24 × 24 × 30-10P	592 × 592 × 762		10.0	-	85@5100	78@3400	105@3400
HBG-24 × 24 × 22-10P	592 × 592 × 558		7.4	-	80@3400	120@3400	130@3400
HBG-24 × 24 × 15-10P	592 × 592 × 381		5.2	-	87@2550	115@2550	150@2550
HBG-24 × 24 × 36-8P	592 × 592 × 915		8	9.8	-	77@4250	88@3400
HBG-24 × 24 × 30-8P	592 × 592 × 762	8.2		-	82@4250	96@3400	125@3400
HBG-24 × 24 × 22-8P	592 × 592 × 558	6.1		-	110@3400	105@2550	125@2550
HBG-24 × 24 × 15-8P	592 × 592 × 381	4.2		-	102@2550	95@1700	140@1700
HBG-24 × 24 × 36-6P	592 × 592 × 915	6		7.6	-	75@3400	110@3400
HBG-24 × 24 × 30-6P	592 × 592 × 762		6.4	44@3400	72@3400	120@3400	115@2550
HBG-24 × 24 × 22-6P	592 × 592 × 558		4.7	53@3400	87@2550	130@2550	120@1700
HBG-24 × 24 × 15-6P	592 × 592 × 381		3.3	65@3400	82@1700	125@1700	140@1250
HBG-20 × 24 × 36-5P	492 × 592 × 915		5	6.3	-	-	-
HBG-20 × 24 × 30-5P	492 × 592 × 762	5.3		44@2800	70@3000	115@3000	125@2550
HBG-20 × 24 × 22-5P	492 × 592 × 558	3.9		53@2800	107@3000	140@2550	115@1500
HBG-20 × 24 × 15-5P	492 × 592 × 381	2.7		65@2800	102@2100	130@1500	110@1000
HBG-20 × 20 × 36-5P	492 × 492 × 915	5		5.4	-	-	-
HBG-20 × 20 × 30-5P	492 × 492 × 762		4.5	44@2300	70@2550	115@2550	125@2100
HBG-20 × 20 × 22-5P	492 × 492 × 558		3.3	53@2300	107@2550	140@2100	115@1250
HBG-20 × 20 × 15-5P	492 × 492 × 381		2.3	65@2300	102@1700	130@1250	110@850
HBG-12 × 24 × 36-3P	287 × 592 × 915		3	3.7	-	-	-
HBG-12 × 24 × 30-3P	287 × 592 × 762	3.1		44@1700	77@1700	125@1700	125@1250
HBG-12 × 24 × 22-3P	287 × 592 × 558	2.3		53@1700	87@1250	135@1250	105@850
HBG-12 × 24 × 15-3P	287 × 592 × 381	1.6		65@1700	82@850	125@850	-

注：1、若遇规格、结构变更，以本公司提供的最新数据为准；有关更新内容请关注本公司网站。
2、本公司接受非表上规格过滤网产品的订货。
Note: 1. In case of specifications, structural changes, HEFIL will provide up-to-date data on website: www.hefil.com.
2. HEFIL makes various other models of HBG filter not listed the above table. Please consult with us if you need.

空气过滤器
Air Filters

空气过滤器
Air Filters

性能特点 Features

- ◆ 过滤效率等级G3~F6可供选择
- ◆ 采用聚酯纤维制成，依纤维线径粗细及密度不同，以非织物方式、多向性、渐层性轧针法制成，具有高透气性、低压损、高集尘量之特性
- ◆ 可带镀锌框、铝合金框、塑料框或不锈钢框
- ◆ Filtration efficiency rating G3~F6 is available for selection
- ◆ Using polyester fibers, in accordance with different diameter and density of them, make into a conformation of the increase in density by non-woven process, it has a property of high permeability, low initial resistance and high dust collection rate
- ◆ The filter can be with the frame made up of aluminum alloy, galvanized steel, stainless steel or plastic



应用 Application

- ◆ 主要作为高效过滤器的预过滤和房间通风系统的新风过滤
- ◆ Suitable as pre-filter used to protect high-performance filters, and filtration of fresh air in clean room ventilation system.

常用规格 Common Specifications

型号 Model	外形尺寸 Dimensions W × H × D (mm)	袋数 No. of Pockets	过滤面积 Media Area(m ²)	各效率规格的初始压降@风量 Initial Pressure Drop (Pa) @ Air Flow (m ³ /h)		
				G3	G4	F6
HBP-24 × 24 × 14-6P	592 × 592 × 381	6	3.3	25@2500 40@3600	35@2500 60@3600	80@2500
HBP-20 × 24 × 14-5P	490 × 592 × 381	5	2.7	25@2100 40@3000	35@2100 60@3000	80@2000
HBP-12 × 24 × 14-3P	287 × 592 × 381	3	1.6	25@1250 40@1800	35@1250 60@1800	80@1250
HBP-24 × 24 × 22-6P	592 × 592 × 558	6	4.6	25@3800 40@5400	35@3800 60@5400	55@2500 85@3600
HBP-20 × 24 × 22-5P	490 × 592 × 558	5	4.1	25@3200 40@4500	35@3200 60@4500	55@2000 85@3000
HBP-12 × 24 × 22-3P	287 × 592 × 558	3	2.3	25@1900 40@2700	35@1900 60@2700	55@1250 85@1800

注：1、若遇规格、结构变更，以本公司提供的最新数据为准；有关更新内容请关注本公司网站。
2、本公司接受非表上规格过滤网产品的订货。
Note: 1. In case of specifications, structural changes, HEFIL will provide up-to-date data on website: www.hefil.com.
2. HEFIL makes various other models of HBP filter not listed the above table. Please consult with us if you need.

性能特点 Features

- ◆ 对≥1.0μm 颗粒的过滤效率在65%~95%
- ◆ 采用特制的高通量低阻力化学纤维布作为滤材，容尘量大
- ◆ 外框为镀锌钢板框、不锈钢板框、铝框或塑料框
- ◆ Trapping 65~95% of ≥1.0μm particles
- ◆ Using special low-resistance and high-throughput non-woven fabrics as the filter material, with a high dust containing capacity
- ◆ Frame can be made of galvanized steel sheet, stainless steel sheet, aluminum alloy or ABS plastic



应用 Application

- ◆ 主要用于电子、生物制药、机械仪表和石化轻工等行业的一般空气净化系统
- ◆ Suitable for the electronics, bio-pharmaceutical, machinery, instrumentation, petrochemical and light industry as general air purification systems.

常用规格 Common Specifications

型号 Model	外形尺寸 Dimensions W × H × D (mm)	折数 No. of Folds	过滤面积 Media Area(m ²)	初始压降@风量 Initial Pressure Drop (Pa) @ Air Flow (m ³ /h)			
				F5(40-45%)	F6(60-65%)	F7(80-85%)	F8(90-95%)
HPM-12 × 24 × 2	290 × 595 × 46	9	0.46	40@250	60@250	70@250	100@250
HPM-24 × 24 × 2	595 × 595 × 46	17	0.9	40@500	60@500	70@500	100@500
HPM-12 × 24 × 3	290 × 595 × 69	9	0.7	40@400	60@400	70@400	100@400
HPM-24 × 24 × 3	595 × 595 × 69	17	1.4	40@790	60@790	70@790	100@790
HPM-12 × 24 × 4	290 × 595 × 90	9	0.9	40@500	60@500	70@500	100@500
HPM-24 × 24 × 4	595 × 595 × 90	17	1.8	40@1000	60@1000	70@1000	100@1000
HPM-12 × 24 × 6	290 × 595 × 150	9	1.5	40@850	60@850	70@850	100@850
HPM-24 × 24 × 6	595 × 595 × 150	17	3.0	40@1700	60@1700	70@1700	100@1700
HPM-12 × 24 × 12	290 × 595 × 292	9	3.0	40@1700	60@1700	70@1700	100@1700
HPM-24 × 24 × 12	595 × 595 × 292	17	6.0	40@3400	60@3400	70@3400	100@3400

注：1、若遇规格、结构变更，以本公司提供的最新数据为准；有关更新内容请关注本公司网站。
2、本公司接受非表上规格过滤网产品的订货。
Note: 1. In case of specifications, structural changes, HEFIL will provide up-to-date data on website: www.hefil.com.
2. HEFIL makes various other models of HPM filter not listed the above table. Please consult with us if you need.

性能特点 Features

- ◆ 对≥5.0μm 颗粒的过滤效率在40%~60%
- ◆ 采用特制的高通量低阻力化学纤维布作为滤材，容尘量大
- ◆ 有纸质、镀锌钢板、不锈钢板、铝合金或塑料外框
- ◆ Trapping 40~60% of ≥5.0μm particles
- ◆ Using special low-resistance and high-throughput non-woven fabrics as the filter material, with a high dust containing capacity
- ◆ Frame can be made of cardboard, galvanized steel sheet, stainless steel sheet, aluminum alloy or plastic

应用 Application

- ◆ 主要作为高效过滤器的预过滤和房间通风系统的净化过滤
- ◆ Suitable as pre-filter used to protect high-performance filters, and clean room ventilation system filters.

常用规格 Common Specifications

型号 Model	外形尺寸 Dimensions W × H × D (mm)	额定风量 Rated Air Flow(m³/h)		初始压降 Initial Pressure Drop(Pa)		过滤面积 Media Area (m²)	折距 Pitch (mm)
		标准 Standard	高风量 High Capacity	标准 Standard	高风量 High Capacity		
HPP-12 × 24 × 1	290 × 595 × 23	600	1200	20	63	0.40	19
HPP-20 × 14 × 1	493 × 341 × 23	550	1100			0.39	
HPP-20 × 15 × 1	493 × 366 × 23	625	1250			0.43	
HPP-20 × 16 × 1	493 × 391 × 23	650	1300			0.45	
HPP-20 × 20 × 1	493 × 493 × 23	800	1600			0.56	
HPP-20 × 24 × 1	493 × 595 × 23	950	1900			0.65	
HPP-24 × 24 × 1	595 × 595 × 23	1200	2400			0.83	
HPP-25 × 14 × 1	620 × 341 × 23	700	1400			0.48	
HPP-25 × 16 × 1	620 × 391 × 23	800	1600			0.57	
HPP-25 × 20 × 1	620 × 493 × 23	1000	2000			0.71	
HPP-14 × 20 × 2	341 × 493 × 46	850	1700	20	70	0.77	20
HPP-20 × 12 × 2	493 × 290 × 46	700	1400			0.70	
HPP-20 × 16 × 2	493 × 391 × 46	900	1800			0.94	
HPP-20 × 18 × 2	493 × 442 × 46	1050	2100			1.01	
HPP-20 × 20 × 2	493 × 493 × 46	1200	2400			1.12	
HPP-24 × 12 × 2	595 × 290 × 46	850	1700			0.79	
HPP-24 × 18 × 2	595 × 442 × 46	1300	2600			1.24	
HPP-24 × 20 × 2	595 × 493 × 46	1400	2800			1.36	
HPP-24 × 24 × 2	595 × 595 × 46	1700	3400			1.64	
HPP-25 × 16 × 2	620 × 391 × 46	1200	2400			1.18	
HPP-25 × 18 × 2	620 × 442 × 46	1350	2700	1.27			
HPP-25 × 20 × 2	620 × 493 × 46	1500	3000	1.42			
HPP-20 × 16 × 4	493 × 391 × 96	950	1900	18	68	1.45	28
HPP-20 × 20 × 4	493 × 493 × 96	1200	2400			1.73	
HPP-24 × 12 × 4	595 × 290 × 96	850	1700			1.28	
HPP-24 × 18 × 4	595 × 442 × 96	1300	2600			1.91	
HPP-24 × 20 × 4	595 × 493 × 96	1400	2800			2.09	
HPP-24 × 24 × 4	595 × 595 × 96	1700	3400			2.55	
HPP-25 × 16 × 4	620 × 391 × 96	1200	2400			1.82	
HPP-25 × 20 × 4	620 × 493 × 96	1500	3000			2.18	
HPP-25 × 29 × 4	620 × 721 × 96	2150	4300			3.27	

注：1、若遇规格、结构变更，以本公司提供的最新数据为准；有关更新内容请关注本公司网站。
2、本公司接受非表上规格过滤网产品的订货。
Note: 1. In case of specifications, structural changes, HEFIL will provide up-to-date data on website: www.hefil.com.
2. HEFIL makes various other models of HPP filter not listed the above table. Please consult with us if you need.

性能特点 Features

- ◆ 对≥5.0μm 颗粒的过滤效率在40%~60%
- ◆ 采用特制的膨松型高通量低阻力化学纤维布作为滤材，容尘量大
- ◆ 有镀锌钢板、铝合金或塑料外框
- ◆ Trapping 40~60% of ≥5.0μm particles
- ◆ Using special low-resistance and high-throughput non-woven fabrics as the filter material, with a high dust containing capacity
- ◆ Frame can be made of cardboard, galvanized steel sheet or aluminum alloy

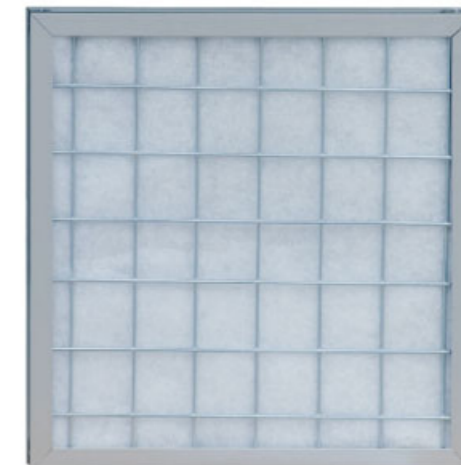
应用 Application

- ◆ 适用于空气系统中新风和回风过滤、局部高效过滤装置的预过滤
- ◆ Suitable as pre-filter used to protect high-performance filters, and clean room ventilation system filters.

常用规格 Common Specifications

型号 Model	外形尺寸 Dimensions W × H × D (mm)	额定风量 Rated Air Flow(m³/h)		初始压降 Initial Pressure Drop(Pa)		过滤面积 Media Area (m²)
		标准 Standard	高风量 High Capacity	标准 Standard	高风量 High Capacity	
HPF-500 × 500 × 25	500 × 500 × 25	1200	2400	20	45	0.25
HPF-500 × 500 × 20	500 × 500 × 20	1200	2400			
HPF-500 × 500 × 15	500 × 500 × 15	1200	2400			

注：1、若遇规格、结构变更，以本公司提供的最新数据为准；有关更新内容请关注本公司网站。
2、本公司接受非表上规格过滤网产品的订货。
Note: 1. In case of specifications, structural changes, HEFIL will provide up-to-date data on website: www.hefil.com.
2. HEFIL makes various other models of HPF filter not listed the above table. Please consult with us if you need.



空气过滤器
Air Filters

空气过滤器
Air Filters

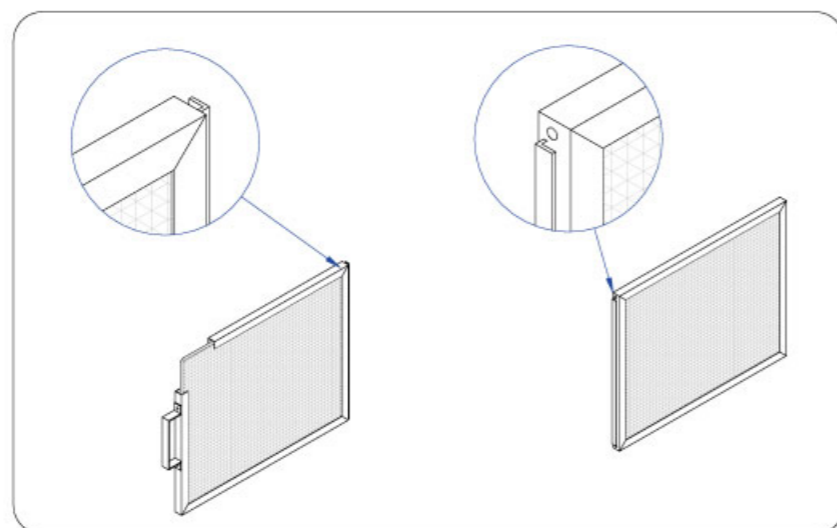
性能特点 Features

- ◆ 进口聚酰胺单丝纤维编织滤料，耐磨、强度高，使用寿命长，综合使用效果好
- ◆ 聚尘率高，初阻力低，防尘性能强，可反复清洗使用
- ◆ 超薄形铝合金型材框，可制成带拉手互连成组型，更换简便安全
- ◆ Using import polyamide monofilament basketwork as filter material, with the characteristics of high wear strength, long service life and good combined effect
- ◆ With High dust collection rate, low initial resistance and good dustproof performance, the filter can be washed repeatedly
- ◆ Using ultra-thin aluminum foil as the frame which can be made into a interlinked group with handle. Replacement of the filter is safe, simple and convenient



应用 Application

- ◆ 办公楼、会议室、医院、商场、体育馆、机场等大型民用建筑通风系统；一般工厂集中通风空调系统；洁净室集中通风空调系统中初级过滤
- ◆ Suitable as pre-filter in ventilation systems of office buildings, conference rooms, hospitals, shopping malls, recreation centers, airports and other huge civil architecture, as well as general factories and clean rooms.



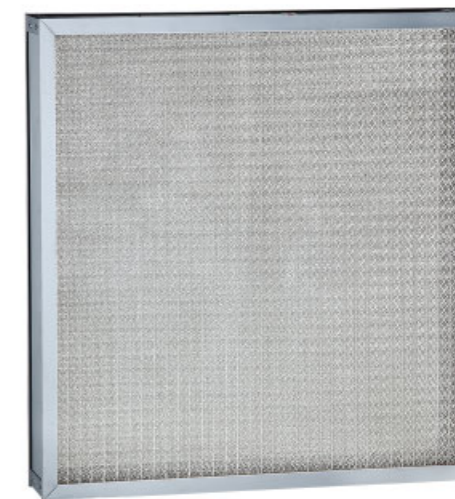
常用规格 Common Specifications

型号 Model	外形尺寸 Dimensions	额定风量 Rated Air Flow(m³/h)	初始压降 Initial Pressure Drop(Pa)	过滤面积 Media Area(m²)
	W×H×D (mm)			
HWN-500×500×15	500×500×15	4500	10	0.25
HWN-500×1000/2×15	500×1000×15	9000		0.5
HWN-500×1500/3×15	500×1500×15	13500		0.75

注：1、若遇规格、结构变更，以本公司提供的最新数据为准；有关更新内容请关注本公司网站。
2、本公司接受非表上规格过滤网产品的订货。
Note: 1. In case of specifications, structural changes, HEFIL will provide up-to-date data on website: www.hefil.com.
2. HEFIL makes various other models of HWN filter not listed the above table. Please consult with us if you need.

性能特点 Features

- ◆ 铝框结构，减少对过滤器清洁和维护的频率
- ◆ 多层的波纹铝网，初阻力低，高容尘量，使用寿命长
- ◆ 重量轻，结构小巧，易于安装
- ◆ 可以利用压缩空气吹洗或清洁液进行多次清洗，重复使用
- ◆ 大大降低引起火灾的危险程度
- ◆ 容易散热的性能可延长风机电机的寿命
- ◆ Aluminum frame structure, reducing the frequency of cleaning and maintenance of the filter
- ◆ Multi-layer corrugated aluminum mesh, low initial resistance, high dust holding capacity and long service life
- ◆ Light weight and compact, easy to install
- ◆ Can use compressed air or cleaning fluid to wash repeatedly
- ◆ Greatly reduce the risk of fire
- ◆ Good heat dissipation, extend the life of the fan motor



应用 Application

- ◆ 办公楼、会议室、医院、商场、体育馆、机场等大型民用建筑通风系统；一般工厂集中通风空调系统；洁净室集中通风空调系统中初级过滤
- ◆ Suitable as pre-filter in ventilation systems of office buildings, conference rooms, hospitals, shopping malls, recreation centers, airports and other huge civil architecture, as well as general factories and clean rooms.

常用规格 Common Specifications

型号 Model	外形尺寸 Dimensions	额定风速 Face Velocity(m/s)	额定风量 Rated Air Flow(m³/h)	初始压降 Initial Pressure Drop(Pa)
	W×H×D (mm)			
HWM-20×10×2	492×238×46	2.5	1050	15
HWM-20×16×2	492×390×46		1720	
HWM-20×20×2	492×492×46		2170	
HWM-24×24×2	594×594×46		3170	
HWM-25×16×2	619×390×46		2170	
HWM-25×20×2	619×492×46		2740	

注：1、若遇规格、结构变更，以本公司提供的最新数据为准；有关更新内容请关注本公司网站。
2、本公司接受非表上规格过滤网产品的订货。
Note: 1. In case of specifications, structural changes, HEFIL will provide up-to-date data on website: www.hefil.com.
2. HEFIL makes various other models of HWM filter not listed the above table. Please consult with us if you need.

性能特点 Features

- ◆ 采用聚酯、聚酰胺、尼龙等化学合成纤维制成，依纤维线径粗细及密度不同，以非织造方式、多向性、渐层性轧针法制成，具有高透气性、低压损、高集尘量之特性
- ◆ 采用内外熔点高低不同的复合纤维制成，纤维之间的接点牢固、结合紧密、不易脱落
- ◆ 不添加任何化学粘剂，使用热熔纤维将粗细纤维混粘在一起，遇火源不易延燃，阻燃点符合德国工业标准DIN53438F1
- ◆ 可清洗并重复使用
- ◆ 可加装镀锌钢板框或铝合金框，亦可加装金属背网，可有效支撑滤网承受大风量不易变形



- ◆ Using polyester, polyamide, nylon, etc. chemical synthetic fibers, in accordance with different diameter and density of them, make into a conformation of the increase in density by non-woven process, it has a property of high permeability, low initial resistance and high dust collection rate
- ◆ Using different melting point of exterior and interior of the fiber, thick and thin fibers was fused together by hot-melt fibers, without any chemical adhesives
- ◆ The contacts between the fibers are strong. The integration between the fibers is closer, and the fiber is not easy to shed.
- ◆ Low flammability, fire resistance measures up to Deutsche industry norm DIN53438F1
- ◆ Can be washed repeatedly
- ◆ Can be with galvanized steel or aluminum alloy frame and also expanded metal on the exhaust side, to effectively prevent deformation of the separator under high-speed airflow

应用 Application

- ◆ 适用于电子、制药、食品等各种工业，防治污染、新风过滤、中效过滤的前置滤网及空调系统回风过滤
- ◆ Apply to electronic, pharmaceutical, food and other industries as prevention and control of pollution, filtration of fresh air, pre-filtering prior to medium-efficiency filter, as well as filtration of return air in central air conditioning system.

常用规格 Common Specifications

型号 Model	HGP-100	HGP-200	HGP-300	HGP-400	HGP-500
材料尺寸 Common Size	5mmT x 2m x 50m	10mmT x 2m x 20m	15mmT x 2m x 20m	20mmT x 2m x 20m	25mmT x 2m x 20m
材质 Material	聚酯 Polyester				
厚度 Thickness	5mm	10mm	15mm	20mm	25mm
标准风速 Norm Velocity	1.0m/s				
初期压损 Initial Pressure Drop	30Pa	40Pa	45Pa	50Pa	58Pa
终期压损 Final Pressure Drop	147Pa	196Pa	196Pa	196Pa	196Pa
平均捕集效率 Average Trapping Efficiency	76%	80%	85%	88%	90%
耐温 Heat Resistance	100°C				
捕尘量 Capacity of Dust Arrestment	450g/m ²	600g/m ²	520g/m ²	460g/m ²	400g/m ²

注：1. 若遇规格、结构变更，以本公司提供的最新数据为准；有关更新内容请关注本公司网站。
2. 本公司接受非表上规格过滤网产品的订货。
Note: 1. In case of specifications, structural changes, HEFIL will provide up-to-date data on website: www.hefil.com.
2. HEFIL makes various other models of HGP filter not listed the above table. Please consult with us if you need.

性能特点 Features

- ◆ 滤料按纤维粗细及密度不同，以非织造方式、多向性、渐层性，轧针法制成
- ◆ 渐密式结构可根据尘埃颗粒大小，被阻挡在不同密度的层次，容量大
- ◆ 一定风速下仍能保持原来形状，增长滤网的寿命，降低更换成本
- ◆ 采用内外熔点高低不同的复合纤维制成，纤维之间接点牢固、结合紧密，不易脱落
- ◆ 滤棉有全粘性(立体喷胶处理)、半粘性(表面喷胶处理)、无粘性(无胶)可供选择
- ◆ 可加装镀锌钢板框或铝合金框，亦可加装金属背网，可有效支撑滤网承受大风量不易变形



- ◆ Using chemical synthetic fibers, in accordance with different diameter and density of them, make into a conformation of the increase in density by non-woven process
- ◆ The structure of gradually increase the density of fibers can block particles of various sizes at the levels of different density. It has a large capacity of dust quantity
- ◆ Under higher air velocity the separator will still maintain the original shape. It has advantages of low cost and long service life
- ◆ Using different melting point of exterior and interior of the fiber, thick and thin fibers was fused together by hot-melt fibers
- ◆ There are full-viscous (spraying glue with three-dimensional treatment), semi-viscous (spraying glue with surface treatment) and non-viscous (no glue) filter to choose from
- ◆ Can be with galvanized steel or aluminum alloy frame and also expanded metal on the exhaust side, to effectively prevent deformation of the separator under high-speed airflow

应用 Application

- ◆ 用于涂装工厂、喷漆房、烤漆房顶部送风系统，收集细小尘埃微粒，防止油漆污染，保证房内空气高度洁净，使烤漆房内气流分布均匀
- ◆ Suitable for the air supply system at top of the spraying-baking booth in painting factory to safeguard a high degree of cleanliness and air-distribution uniformity. Trapping small dust particles and preventing pollution of paint.

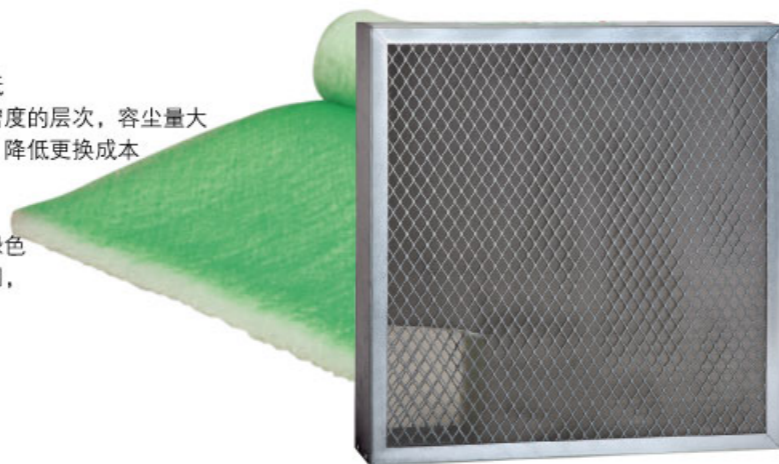
常用规格 Common Specifications

型号 Model	HCF-600G	
材料尺寸 Common Size	22mmT x 1.6m x 20m	22mmT x 2m x 20m
材质 Ingredient	聚酯 Polyester	
克重 Gram Weight	600g/m ²	
容尘量 Capacity of Dust Arrestment	400g/m ²	
风速 Norm Velocity	0.26m/s	
耐温 Heat Resistance	120°C	
防火级别 Fire-protection Rating	Class F1 DIN53438 (德国工业标准) 自灭型	
捕集效率 Average Trapping Efficiency	97~99%	
初期压损 Initial Pressure Drop	26Pa	
终期压损 Final Pressure Drop	400Pa	

注：1. 若遇规格、结构变更，以本公司提供的最新数据为准；有关更新内容请关注本公司网站。
2. 本公司接受非表上规格过滤网产品的订货。
Note: 1. In case of specifications, structural changes, HEFIL will provide up-to-date data on website: www.hefil.com.
2. HEFIL makes various other models of HCF filter not listed the above table. Please consult with us if you need.

性能特点 Features

- ◆ 采用玻璃长纤维，以非织造方式渐密式结构制成
- ◆ 纤维强度高、弹性佳，对漆雾捕尘效率佳，阻力低
- ◆ 渐密式结构可根据尘埃颗粒大小，被阻挡在不同密度的层次，容尘量大
- ◆ 一定风速下仍能保持原来形状，增长滤网的寿命，降低更换成本
- ◆ 耐高温性好，可耐170℃
- ◆ 耐湿性强，可达到100%RH相对湿度
- ◆ 以颜色区分捕尘方向，进风面为白色，出风面为绿色
- ◆ 可加装镀锌钢板框或铝合金框，亦可加装金属背网，可有效支撑滤网承受大风量不易变形



- ◆ Using long glass fiber to make into a conformation of the increase in density by non-woven process
- ◆ The glass fibers are strong, resilient, and with high efficiency, low resistance characteristic to catch paint mist
- ◆ The structure of gradually increase the density of fibers can block particles of various sizes at the levels of different density. It has a large capacity of dust quantity
- ◆ Under higher air velocity the separator will still maintain the original shape. It has advantages of low cost and long service life
- ◆ With good temperature tolerance, operating temperature can reach 170℃
- ◆ With good wet fastness, operating humidity can be 100%RH
- ◆ Coloring differentiates the direction of catching dust, the white as a inlet side and the green as a outlet side
- ◆ Can be with galvanized steel or aluminum alloy frame and also expanded metal on the exhaust side, to effectively prevent deformation of the separator under high-speed airflow

应用 Application

- ◆ 一般空调系统中进风粗滤；干式涂装工程如喷漆台、汽车喷漆房漆雾排出系统；汽车喷漆房地面排气过滤
- ◆ Suitable as pre-filter of fresh air in general air conditioning system, as well as exhaust gas filter in paint mist exhaust system on the floor of dry spray booth.

常用规格 Common Specifications

型号 Model	HGF-60	HGF-100
材料尺寸 Common Size	60mmT × 1m × 20m 60mmT × 2m × 20m	100mmT × 1m × 20m 100mmT × 2m × 20m
捕集效率 Average Trapping Efficiency	92~97%	97~99%
初期压损 Initial Pressure Drop	10Pa	15Pa
终期压损 Final Pressure Drop	130Pa	150Pa
耐温 Heat Resistance	170℃	

注：1、若遇规格、结构变更，以本公司提供的最新数据为准；有关更新内容请关注本公司网站。
2、本公司接受非表上规格过滤网产品的订货。
Note: 1. In case of specifications, structural changes, HEFIL will provide up-to-date data on website: www.hefil.com.
2. HEFIL makes various other models of HGF separator not listed the above table. Please consult with us if you need.

性能特点 Features

- ◆ 对≥0.3μm 颗粒的过滤效率在99.99%以上
- ◆ 箱体采用优质镀锌钢板、阳极氧化铝合金型材或不锈钢板制成，外贴防火保温层
- ◆ 采用无隔板折叠芯片，过滤材料采用超细玻纤滤纸，阻力低风量大，占用空间小
- ◆ 结构紧凑，投资费用低，安装维护方便简单
- ◆ 出风面装有优质铝板网或不锈钢板网，美观大方
- ◆ 每台过滤箱经严格检测

- ◆ Trapping 99.99% or higher of 0.3μm particles
- ◆ High-quality galvanized steel sheet, aluminum alloy extrusions or stainless steel frame with externally applied fireproof heat-insulator
- ◆ Adopt computer-controlled automatic production line for manufacture of mini pleat filter material, occupies small space
- ◆ Using special glass fiber filter paper as the filter material, low resistance and large air volume
- ◆ Compact structure, low-cost investment, easy installation and maintenance
- ◆ Air outlet with a high-quality aluminum or stainless expanded sheet has a generous appearance
- ◆ Each HEPA box through is rigorous testing

应用 Application

- ◆ 用于高洁净度厂房和洁净室的送风系统的终端过滤，有效地确保气流速度和防止涡流
- ◆ Suitable as terminal filtration of air supply system in clean workshops and clean rooms required the high cleanliness. Available to ensure air flow speed and prevent swirl.

常用规格 Common Specifications

型号 Model	箱体尺寸 Box Dimensions (mm)	进风管直径 Inlet Diameter (mm)	初始压降@风量 Initial Pressure Drop (Pa) @ Air Flow (m³/h)			
			100@500	125@620	150@780	180@870
HDU-570	570 × 570 × 150	Φ 250 Φ 300 Φ 350	100@500	125@620	150@780	180@870
HDU-600	600 × 600 × 150		100@550	125@690	150@870	180@970
HDU-610	610 × 610 × 150		100@570	125@715	150@900	180@1000
HDU-1170	1170 × 570 × 150		100@1030	125@1290	150@1630	180@1800
HDU-1200	1200 × 600 × 150		100@1100	125@1390	150@1760	180@1950
HDU-1210	1210 × 600 × 150		100@1120	125@1400	150@1780	180@1970
HDU-1220	1220 × 610 × 150		100@1150	125@1440	150@1820	180@2020

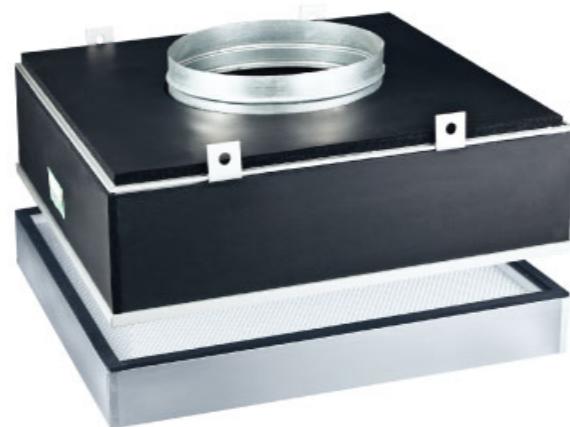
注：1、若遇规格、结构变更，以本公司提供的最新数据为准；有关更新内容请关注本公司网站。
2、本公司接受非表上规格过滤箱产品的订货。
Note: 1. In case of specifications, structural changes, HEFIL will provide up-to-date data on website: www.hefil.com.
2. HEFIL makes various other models of HDU box not listed the above table. Please consult with us if you need.



性能特点 Features

- ◆ 对 $\geq 0.3\mu\text{m}$ 颗粒的过滤效率在99.99%以上
- ◆ 箱体采用优质镀锌钢板、喷塑冷轧钢板或不锈钢板制成，外贴防火保温层
- ◆ 内装可更换的无隔板过滤器，过滤材料采用超细玻纤滤纸，阻力低风量大，占用空间小
- ◆ 美观大方、结构紧凑，安装维护方便简单
- ◆ 其中每台过滤器经严格检测

- ◆ Trapping 99.99% or higher of $0.3\mu\text{m}$ particles
- ◆ Anodized aluminum alloy extrusions frame with externally applied fireproof heat-insulator
- ◆ Adopting ultra-fine fiber glass paper with low resistance and large air volume, the built-in mini pleat filter occupies small space
- ◆ Generous appearance, compact structure, easy installation and maintenance
- ◆ Each filter in HEPA box is through rigorous testing



应用 Application

- ◆ 用于高洁净度厂房和洁净室的送风系统的终端过滤，有效地确保气流速度和防止涡流
- ◆ Suitable as terminal filtration of air supply system in clean workshops and clean rooms required the high cleanliness. Available to ensure air flow speed and prevent swirl.

常用规格 Common Specifications

型号 Model	箱体尺寸 Box Dimensions (mm)	可置HEPA规格 Mountable HEPA (mm)	进风管直径 Inlet Diameter (mm)	初始压降@风量 Initial Pressure Drop (Pa) @ Air Flow (m^3/h)				
				100@430	125@535	150@680	180@760	
HRU-570	570 × 570 × 180	530 × 530 × 70	Φ 250	100@430	125@535	150@680	180@760	
HRU-600	600 × 600 × 180	560 × 560 × 70		100@480	125@600	150@760	180@850	
HRU-610	610 × 610 × 180	570 × 570 × 70		100@500	125@620	150@780	180@880	
HRU-1170	1170 × 570 × 180	1130 × 530 × 70		Φ 300	100@930	125@1150	150@1460	180@1600
HRU-1200	1200 × 600 × 180	1160 × 560 × 70		Φ 350	100@1000	125@1255	150@1590	180@1770
HRU-1210	1210 × 600 × 180	1170 × 570 × 70			100@1015	125@1267	150@1600	180@1790
HRU-1220	1220 × 610 × 180	1180 × 580 × 70			100@1140	125@1300	150@1650	180@1835

注：1、若遇规格、结构变更，以本公司提供的最新数据为准；有关更新内容请关注本公司网站。
2、本公司接受非表上规格过滤箱产品的订货。
Note: 1. In case of specifications, structural changes, HEFIL will provide up-to-date data on website: www.hefil.com.
2. HEFIL makes various other models of HRU box not listed the above table. Please consult with us if you need.

性能特点 Features

- ◆ 箱体采用优质冷轧钢板制成
- ◆ 表面静电喷塑
- ◆ 美观大方，结构紧凑，便于安装和维护
- ◆ 出风面散流面板为铝质喷塑、冷轧钢板喷塑或不锈钢
- ◆ Use of high-quality cold-rolled steel plate manufacturing the box
- ◆ The surface is treated by electrostatic plastic spray
- ◆ Generous appearance, compact structure, easy installation and maintenance
- ◆ The panel on air outlet can be made of aluminum plate or cold-rolled steel plate with electrostatic plastic spray, or stainless steel

应用 Application

- ◆ 用于空调和通风系统中高效过滤器的安装，有效地确保气流速度和防止涡流
- ◆ Suitable for installation of HEPA filter in air-conditioning and ventilation systems. Available to ensure air flow speed and prevent swirl.

常用规格 Common Specifications

型号 Model	额定风量 Rated Air Flow (m^3/h)	可置HEPA规格 Mountable HEPA (mm)	箱体尺寸 Box Dimensions (mm)		进风口尺寸 Inlet Dimensions (mm)		面板尺寸 External Size of Panel (mm)
			侧送风 Side-inlet	顶送风 Top-inlet	侧送风 Side-inlet	顶送风 Top-inlet	
HHD320	350	320 × 320 × 220	375 × 375 × 550	375 × 375 × 360	200 × 200	200 × 200	430 × 430
HHD484/10	1000	484 × 484 × 220	540 × 540 × 550	540 × 540 × 390	320 × 200	250 × 250	594 × 594
HHD484/15	1500	726 × 484 × 220	782 × 540 × 550	782 × 540 × 390	400 × 200	400 × 250	836 × 594
HHD484/20	2000	968 × 484 × 220	1024 × 540 × 550	1024 × 540 × 390	500 × 200	500 × 250	1078 × 594
HHD610/05	500	305 × 610 × 150	665 × 360 × 480	665 × 360 × 320	250 × 200	250 × 200	720 × 415
HHD610/10	1000	610 × 610 × 150	665 × 665 × 480	665 × 665 × 320	320 × 250	320 × 250	720 × 720
HHD610/15	1500	915 × 610 × 150	970 × 665 × 480	970 × 665 × 320	500 × 250	500 × 250	1025 × 720
HHD610/20	2000	1219 × 610 × 150	1275 × 665 × 480	1275 × 665 × 320	500 × 250	630 × 250	1330 × 720
HHD630/05	750	315 × 630 × 220	685 × 370 × 550	685 × 370 × 390	250 × 200	250 × 200	740 × 425
HHD630/10	1500	630 × 630 × 220	685 × 685 × 550	685 × 685 × 390	320 × 250	320 × 320	740 × 740
HHD630/15	2200	945 × 630 × 220	1000 × 685 × 550	1000 × 685 × 390	500 × 250	500 × 320	1055 × 740
HHD630/20	3000	1260 × 630 × 220	1315 × 685 × 550	1315 × 685 × 390	600 × 250	630 × 320	1370 × 740

注：1、若遇规格、结构变更，以本公司提供的最新数据为准；有关更新内容请关注本公司网站。
2、本公司接受非表上规格送风口产品的订货。
Note: 1. In case of specifications, structural changes, HEFIL will provide up-to-date data on website: www.hefil.com.
2. HEFIL makes various other models of HHD diffuser not listed the above table. Please consult with us if you need.



性能特点 Features

- ◆ 由镀锌板、不锈钢板、铝合金板或喷塑钢板做成的FFU箱体，结构精巧坚固，便于安装
- ◆ 功耗低，运行成本低
- ◆ 采用强力风机，可在高静压下长期使用，但又可同时维持低噪音
- ◆ 应用范围广，适合从10,000级到1级的各种洁净室
- ◆ 三档调速控制
- ◆ Outer casing is made of galvalume, stainless steel, electrolytic sheet, galvanized sheet iron or aluminum alloy sheet
- ◆ Structure of compact, easy to install
- ◆ Low power consumption, low running costs
- ◆ With a high-capacity fan, in long-term use under high static pressure, but can also maintain a low noise
- ◆ Wide range of applications, fit a variety of clean room from FS209D Class 10,000 ~ Class 1



应用 Application

- ◆ FFU系统方便灵活，可以适用于任何结构和各等级的洁净室。它还可以用在其他净化设备上，如：可移动洁净房、洁净工作台、洁净走廊等。
- ◆ FFU system is convenient and flexible, can be applied to any structure and the level of the clean room. It can also be used in other cleaning devices, such as: portable clean room, clean bench, clean corridors and so on.

常用规格 Common Specifications

型号 Model	HFU-HA24		HFU-HA44		HFU-HA22	
模组尺寸 Module Size (mm)	1175 × 575 × 340		1175 × 1175 × 340		575 × 575 × 340	
面风速 Face Velocity (m/s)	低Low	高High	低Low	高High	低Low	高High
	0.35	0.55	0.35	0.55	0.35	0.55
噪音 Noise (dB(A))	≤46	≤52	≤48	≤54	≤46	≤52
电源 Power Supply	AC, 1-Φ220V/50Hz					
功耗 Power Dissipation (W)	100~120		200~245		75~90	
机身重量 Host Weight (kg)	25		45		15	
过滤器效率 HEPA Efficiency	≥99.99 ~ 99.999% @0.3μm					
过滤器规格 HEPA Size (mm)	1170 × 570 × 80/70		1170 × 1170 × 80/70		570 × 570 × 80/70	
过滤器重量 HEPA Wight (kg)	9.5		17		5.2	
机外静压 External Static Pressure (Pa)	98					

注：1、若遇规格、结构变更，以本公司提供的最新数据为准；有关更新内容请关注本公司网站。
2、本公司接受非表上规格FFU产品的订货。
Note: 1. In case of specifications, structural changes, HEFIL will provide up-to-date data on website: www.hefil.com.
2. HEFIL makes various other models of FFU not listed the above table. Please consult with us if you need.

性能特点 Features

- ◆ 冷轧钢板烤漆或不锈钢板做成的HCU箱体，结构精巧坚固，便于安装
- ◆ 功耗低，运行成本低
- ◆ 采用强力风机，可在高静压下长期使用，但又可同时维持低噪音
- ◆ 应用范围广，适合从10,000级到1级的各种洁净室
- ◆ Outer casing is made of high-quality cold-rolled steel plate treated by electrostatic plastic spray or stainless steel sheet
- ◆ Structure of compact, easy to install
- ◆ Low power consumption, low running costs
- ◆ With a high-capacity fan, in long-term use under high static pressure, but can also maintain a low noise
- ◆ Wide range of applications, fit a variety of clean room from FS209D Class 10,000 ~ Class 1



应用 Application

- ◆ HCU小型过滤单元方便灵活，可以适用于多种净化设备上，如：可移动洁净房、洁净工作台、洁净操作箱、洁净走廊、洁净生产线等
- ◆ HCU fan clean unit is convenient and flexible. It can be used in a variety of cleaning devices, such as: portable clean room, clean bench, clean corridors, clean production line and so on.

常用规格 Common Specifications

型号 Model	HCU-60	HCU-300	HCU-600
外形尺寸 Dimensions (mm)	240 × 240 × 144	500 × 500 × 200	650 × 650 × 200
面风速 Face Velocity (m/s)	0.6	0.45	0.5
额定风量 Rated Air Flow (m³/h)	60	300	600
噪音 Noise (dB(A))	≤56	≤57	≤58
电源 Power Supply	AC, 1-Φ220V/50Hz		
功耗 Power Dissipation (W)	30	68	72
过滤器效率 HEPA Efficiency	≥99.99% @0.3μm		
过滤器规格 HEPA Size (mm)	200 × 200 × 50	460 × 460 × 50	460 × 460 × 50
重量 Weight (kg)	4.6	23	29
开孔尺寸 Outlet Opening Size (mm)	180 × 180	420 × 420	570 × 570

注：1、若遇规格、结构变更，以本公司提供的最新数据为准；有关更新内容请关注本公司网站。
2、本公司接受非表上规格HCU产品的订货。
Note: 1. In case of specifications, structural changes, HEFIL will provide up-to-date data on website: www.hefil.com.
2. HEFIL makes various other models of HCU fan clean unit not listed the above table. Please consult with us if you need.

性能特点 Features

- ◆ 箱体材质为优质冷轧钢板静电喷塑处理；不锈钢底板
- ◆ 大风量双速高压风机
- ◆ 优质无隔板高效过滤器
- ◆ 不锈钢喷嘴，出口口的风速>25m/s
- ◆ 红外线感应器
- ◆ 不锈钢单开门，德制Oubao闭门器
- ◆ 可程式控制系统，进口电器元件，感应自动吹淋，LED显示吹淋时间(0~99s可调)
- ◆ Outer casing is made of high-quality cold-rolled steel plate treated by electrostatic plastic spray, floor plate is made of stainless steel sheet
- ◆ Using two-speed air fans with high pressure and airflow
- ◆ Containing high-quality mini-pleat HEPA panel filter
- ◆ Stainless steel nozzles, exiting velocity $\geq 25\text{m/s}$
- ◆ Equipped with infrared sensors
- ◆ Single swinging door made of stainless steel, equipped German-made Oubao door closer
- ◆ Programmable logic control system is made use of imported electrical components, with sensing of automatic blow, blowing time (0~99s adjustable) by LED display



应用 Application

- ◆ HAS系列风淋室是洁净厂房和装配式洁净小室的配套设备。用于吹除进入净化厂房的人员和携带物品表面附着的尘埃，同时风淋室也起到气闸的作用，防止未经净化的空气进入洁净区域。是进行人身净化和防止室外空气污染洁净区的有效设备
- ◆ HAS air shower series is clean workshop and small fabricated clean-room equipment, can be use for blowing off the dust attached to the surface of the staff entering the clean room and the objects brought into. At the same time, air shower also plays a role of the air brake to prevent access of unclean air to clean area. It is an effective equipment for personal purification and prevention of outdoor air polluting clean the area.

常用规格 Common Specifications

型号 Model	HAS-1A	HAS-1B	HAS-2A	HAS-2B
形式 Type	单人/双侧吹风 1-man, 2-side blowing	单人/单侧吹风 1-man, 1-side blowing	双人/双侧吹风 2-man, 2-side blowing	双人/单侧吹风 2-man, 1-side blowing
过滤效率 HEPA Efficiency	$\geq 99.9\% @ 0.5\mu\text{m}$			
吹淋时间 Shower Time	0~99s (可调Adjustable)			
喷嘴出口风速 Exiting Velocity	$\geq 25\text{m/s}$			
喷嘴口径与数量 Nozzle Diameter, Qty	$\Phi 38\text{mm}$, 16pcs	$\Phi 38\text{mm}$, 8pcs	$\Phi 38\text{mm}$, 32pcs	$\Phi 38\text{mm}$, 16pcs
电源 Power Supply	AC, 3 Φ -380V/50Hz			
功耗 Power Dissipation	$\leq 800\text{W}$	$\leq 400\text{W}$	$\leq 1600\text{W}$	$\leq 800\text{W}$
外形尺寸 External Dimensions (W×D×H) (mm)	1300×1000×2150	1100×900×2150	1300×2000×2150	1100×1800×2150
风淋区尺寸 Shower Area (W×D×H) (mm)	800×920×2000	800×820×2000	800×1920×2000	800×1720×2000
重量 Weight	~400kg	~350kg	~700kg	~600kg
高效过滤器规格 HEPA Outfit	610×610×70(mm) 2pcs	610×610×70(mm) 1pcs	610×610×70(mm) 4pcs	610×610×70(mm) 2pcs

注：1、若遇规格、结构变更，以本公司提供的最新数据为准；有关更新内容请关注本公司网站。
2、本公司接受非表上规格风淋室产品的订货。
Note: 1. In case of specifications, structural changes, HEFIL will provide up-to-date data on website: www.hefil.com.
2. HEFIL makes various other models of HAS air shower not listed the above table. Please consult with us if you need.

性能特点 Features

- ◆ 传递窗的内箱体表面采用不锈钢工作台面，平整光洁
- ◆ 箱体采用优质冷轧薄钢板或全不锈钢板制成
- ◆ 采用机械联锁或电子联锁，可防止两侧门同时被打开
- ◆ The work surface of internal cabinet is made of stainless steel, flat and smooth
- ◆ Outer casing is made of high-quality cold-rolled steel or stainless steel sheet
- ◆ Mechanical or electronic interlocking, to prevent both sides of the door opened at the same time

应用 Application

- ◆ 主要用于洁净区与洁净区之间、洁净区与非洁净区之间物品的传递，把对洁净室的污染降到最低程度
- ◆ Mainly used to deliver goods between clean areas or between clean area and non-clean area, to minimize the contamination of clean room.

常用规格 Common Specifications

型号 Model	外形尺寸 Dimensions	工作区尺寸 Working Area
	W×H×D (mm)	W×H×D (mm)
HBX-555	690×590×500	500×500×500
HBX-556	690×590×600	500×500×600
HBX-666	790×690×600	600×600×600
HBX-667	790×690×700	600×600×700
HBX-777	890×790×700	700×700×700

注：1、若遇规格、结构变更，以本公司提供的最新数据为准；有关更新内容请关注本公司网站。
2、本公司接受非表上规格传递窗产品的订货。
Note: 1. In case of specifications, structural changes, HEFIL will provide up-to-date data on website: www.hefil.com.
2. HEFIL makes various other models of HBX pass box not listed the above table. Please consult with us if you need.



性能特点 Features

- ◆ 灵活地吊装于需要高洁净度的工艺点上方，以满足局部高洁净度的要求
- ◆ 箱体可由壁板、喷塑冷轧钢板或全不锈钢制成
- ◆ 可单独使用，也可多个并联组成洁净层流带
- ◆ 投资省、见效快、安装简便、运行费用低
- ◆ 洁净度：100级（≥0.5μm 尘埃数≤3.5颗/升）
- ◆ 平均风速0.35~0.55m/s
- ◆ 噪声≤64dB(A)
- ◆ Can be lifted over the process point that requiring high cleanliness, to meet the requirements of local high cleanliness
- ◆ Outer casing can be made of sandwich panel, cold-rolled steel or stainless steel sheet
- ◆ Can be used alone, also be composed of multiple parallel into a banding clean laminar flow
- ◆ Less investment, fast effect, easy installation, low operating costs
- ◆ Cleanliness: FS209E Class 100 / ISO Class 5
- ◆ Mean Stream Velocity: 0.35~0.55m/s
- ◆ Noise: ≤64dB(A)



应用 Application

- ◆ 主要用于电子、生物、医药、食品、精密仪器等行业的无尘无菌操作环境，提供局部高洁净度工作环境
- ◆ Mainly used in clean and sterile operating environment of electronics, biology, medicine, food, precision instruments, provide high cleanliness of the local environment.

常用规格 Common Specifications

型号 Model	额定风量 Rated Air Flow (m³/h)	外形尺寸 Dimensions		工作区尺寸 Working Area (mm)	HEPA规格 HEPA Outfit	电源 Power Supply and Dissipation	
		L × W × H (mm)					
HLB1220/610	1200	1360 × 740 × 850		1220 × 610	610 × 610 × 150 (mm) 2pcs	AC 1Φ-220V/50Hz (1Φ-110V/60Hz)	1.0kW
HBL1220/915	1800	1360 × 1040 × 850		1220 × 915	915 × 610 × 150 (mm) 2pcs		1.1kW
HBL1220/1220	2400	1360 × 1360 × 850		1220 × 1220	1219 × 610 × 150 (mm) 2pcs		1.3kW
HBL2500/915	4800	3200 × 1040 × 600		2500 × 915	915 × 610 × 150 (mm) 4pcs	AC 3Φ-380V/50Hz (3Φ-200V/60Hz)	1.8kW

注：1、若遇规格、结构变更，以本公司提供的最新数据为准；有关更新内容请关注本公司网站。
2、本公司接受非表上规格层流传递窗产品的订货。
Note: 1. In case of specifications, structural changes, HEFIL will provide up-to-date data on website: www.hefil.com.
2. HEFIL makes various other models of HLB laminar booth not listed the above table. Please consult with us if you need.

性能特点 Features

- ◆ 提供洁净度等级为100级的操作环境，对于粒径≥0.5μm 的尘埃≤3.5颗/升
- ◆ 水平层流型或垂直层流型
- ◆ 采用超薄型无隔板高效空气过滤器，占用空间小
- ◆ 采用触摸式电子控制面板，风机风量可无级调节，保证工作区的风速始终处于理想状态
- ◆ 不锈钢工作台面，有机玻璃围挡，可配备紫外灯远程控制电气接口
- ◆ Providing for working environment of Class 100 cleanliness
- ◆ Two type of device: cross laminar flow & down laminar flow
- ◆ Adopting ultra-fine fiber glass paper with low resistance and large air volume, the built-in mini pleat filter occupies small space
- ◆ To ensure that the air velocity of working area has always been the ideal state, the fan delivery can be regulated steplessly by electronic touch-control panel
- ◆ Fitted up with stainless steel working surface and Plexiglas guard board. The ultraviolet light can be equipped with electric remote control interface



应用 Application

- ◆ 主要用于电子、生物、医药、精密仪器等行业的高洁净度的操作环境，是一种通用性较强的局部空气净化设备
- ◆ Clean bench is used for maintaining limited workspace as clean environment using gem-free and dust-free device. Dust-free and gem-free air of less than Class 100 are collected and sent at speed of up to 0.5m/sec, workspace remains clean area with less than Class 100.

常用规格 Common Specifications

型号 Model	标准型 Normal		医用型 Medical	
	HCB-1H	HCB-2H	HCB-1V	HCB-2V
洁净等级 Cleanliness Level	FS209E Class 100 / ISO Class 5			
气流方式 Air Stream Direction	水平层流型 Cross Laminar Flow		垂直层流型 Down Laminar Flow	
平均风速 Mean Stream Velocity	0.3 ~ 0.5m/s (可调Adjustable)			
噪声 Noise	≤62dB(A)			
电源 Power Supply	AC, 1Φ-220V/50Hz			
功耗 Power Dissipation	0.4kW	0.8kW	0.4kW	0.8kW
重量 Weight	160kg	260kg	150kg	350kg
外形尺寸 External Dimensions (W × D × H)	900 × 700 × 1450(mm)	1760 × 700 × 1450 (mm)	1035 × 700 × 1600 (mm)	1665 × 700 × 1600 (mm)
工作区尺寸 Working Area (W × D × H)	820 × 480 × 600(mm)	1680 × 480 × 600 (mm)	870 × 680 × 525 (mm)	1510 × 680 × 525 (mm)
HEPA过滤器 HEPA Outfit	820 × 600 × 50, 1pcs	820 × 600 × 50, 2pcs	820 × 600 × 50, 1pcs	820 × 600 × 50, 1pcs 600 × 600 × 50, 1pcs
荧光灯/紫外灭菌灯 Fluorescent/Ultraviolet	20W/20W	40W/30W	20W / 20W	30W × 2 / 30W × 2
照度 Luminosity	≥300Lx			
可操作人数 Seating Capacity	单人单面 1-man, 1-side	双人单面 2-man, 1-side	单人双面 1-man, 2-side	双人双面 2-man, 2-side

注：1、若遇规格、结构变更，以本公司提供的最新数据为准；有关更新内容请关注本公司网站。
2、本公司接受非表上规格工作台产品的订货。
Note: 1. In case of specifications, structural changes, HEFIL will provide up-to-date data on website: www.hefil.com.
2. HEFIL makes various other models of HCB clean bench not listed the above table. Please consult with us if you need.

性能特点 Features

- ◆ 出风口洁净度等级为100级，对于粒径 $\geq 0.5\mu\text{m}$ 的尘埃 ≤ 3.5 颗/升
- ◆ 箱体采用冷轧钢板制造，表面喷塑
- ◆ 无需安装，移动方便
- ◆ 采用风量可调风机系统，保证出风面的风速始终处于理想状态
- ◆ 底部装有万向转动带刹车脚轮
- ◆ Providing for Class 100 cleanliness level of air outlet
- ◆ Outer casing is made of high-quality cold-rolled steel plate treated by electrostatic plastic spray
- ◆ No installation, easy to move
- ◆ To ensure that the air velocity of outlet has always been the ideal state, the fan delivery can be regulated steplessly by electronic touch-control panel
- ◆ The bottom of outer casing is equipped with universal wheels fitted with brake



应用 Application

- ◆ 提供局部洁净工作环境，具有无需安装、移动方便等优点，适用于小范围中低洁净度要求的环境，尤其适用于经常变换工作位置的工艺需要
- ◆ Providing for small-scale local clean working environment, the purifier is no need to install and easy to move. In particular, apply to the work process needs of the constantly changing location.

常用规格 Common Specifications

型号 Model	HSP-1000	HSP-1500
出风口洁净度等级 Cleanliness Level of Air Outlet		
额定风量 Rated Air Flow	1000m ³ /h (可调Adjustable)	1500m ³ /h (可调Adjustable)
平均风速 Mean Stream Velocity	0.35 ~ 0.7m/s (可调Adjustable)	
噪声 Noise	$\leq 65\text{dB(A)}$	
电源 Power Supply	AC, 1 Φ -220V/50Hz	
最大功耗 Max. Power Dissipation	0.5 kW	
重量 Weight	80kg	90kg
外形尺寸 External Dimensions (W×D×H)	710×450×1610 (mm)	750×450×1610 (mm)
HEPA规格 HEPA Outfit	610×610×70 (mm)	760×610×70 (mm)

注：1. 若遇规格、结构变更，以本公司提供的最新数据为准；有关更新内容请关注本公司网站。
2. 本公司接受非表上规格自净器产品的订货。
Note: 1. In case of specifications, structural changes, HEFIL will provide up-to-date data on website: www.hefil.com.
2. HEFIL makes various other models of HSP self-purifier not listed the above table. Please consult with us if you need.

性能特点 Features

- ◆ 有H10~H14各种效率规格适应不同的要求
- ◆ 不锈钢外框配以特种耐温密封材料，耐温250℃及319℃
- ◆ 专用折叠设备进行折叠
- ◆ 特制玻璃纤维滤纸作为滤材
- ◆ 特种铝箔间隔片
- ◆ 每台滤器经抗挥发处理并严格检测
- ◆ There are all kinds of H10~H14 efficiency standards to adapt to different requirements
- ◆ Stainless steel frame with special high temperature sealant, operating temperature can reach 250℃ or 319℃
- ◆ Adopt special folding machine for manufacturing
- ◆ Using special glass fiber filter paper as the filter material
- ◆ Using special aluminum foil as separator
- ◆ Each filter is through rigorous testing after anti-evaporation process



应用 Application

- ◆ 主要用于超净烘箱、超净清洗机、化工行业等要求高温空气净化化的设备及系统
- ◆ Suitable for clean drying oven, clean washing machine, chemical industry and other high-temperature air purification equipments and systems.

常用规格 Common Specifications

型号 Model	外形尺寸 Dimensions W×H×D (mm)	过滤面积 Media Area (m ²)		额定风量 Rated Air Flow (m ³ /h)		初始压降 Initial Pressure Drop (Pa)			
		标准 Standard	高风量 High Capacity	标准 Standard	高风量 High Capacity	H10	H12	H13	H14
HTR320	320×320×220	4.1	6.1	350	525	≤ 160	≤ 200	≤ 235	≤ 255
HTR484/10	484×484×220	9.6	14.4	1000	1500				
HTR484/15	726×484×220	14.6	21.9	1500	2250				
HTR484/20	968×484×220	19.5	29.2	2000	3000				
HTR630/05	315×630×220	8.1	12.1	750	1200				
HTR630/10	630×630×220	16.5	24.7	1500	2250				
HTR630/15	945×630×220	24.9	37.3	2200	3300				
HTR630/20	1260×630×220	33.4	50.1	3000	4500				
HTR610/03	305×305×150	2.4	3.6	250	375				
HTR610/05	305×610×150	5.0	7.5	500	750				
HTR610/10	610×610×150	10.2	15.3	1000	1500				
HTR610/15	915×610×150	15.4	23.1	1500	2250				
HTR610/20	1220×610×150	20.6	30.9	2000	3000				
HTR610/05X	305×610×292	10.1	15.1	1000	1500				
HTR610/10X	610×610×292	20.9	31.3	2000	3000				

注：1. 若遇规格、结构变更，以本公司提供的最新数据为准；有关更新内容请关注本公司网站。
2. 本公司接受非表上规格过滤器产品的订货。
Note: 1. In case of specifications, structural changes, HEFIL will provide up-to-date data on website: www.hefil.com.
2. HEFIL makes various other models of HTR filter not listed the above table. Please consult with us if you need.

性能特点 Features

- ◆ 柱状颗粒活性炭并经特殊化学配方处理
- ◆ 吸附能力强、重量轻、安装方便
- ◆ Columnar activated charcoal particles with a special chemical formula treatment
- ◆ High adsorption capacity, light weight, easy installation

应用 Application

- ◆ 专为中央空调和集中通风系统设计，清除空气中的异味(恶臭)和有害气体
- ◆ 可根据实际需要多种特制活性炭材料，如挥发性有机化合物，酸性、碱性气体，甲醛，汞蒸气，放射性气体
- ◆ Exclusively designed for central air conditioning and central ventilation system, eliminate the odor (smell) and harmful gases in air
- ◆ A variety of special activated charcoal materials can be provided according to the actual needs, such as elimination of acid gas, alkaline gas, formaldehyde, mercury vapor as well as radioactive gases



常用规格 Common Specifications

型号 Model	外形尺寸 Dimensions	结构 Structural Style	活性炭含量 Charcoal Content (kg)	过滤器重量 Filter Weight (kg)	压降@风量 Pressure Drop (Pa) @ Air Flow (m³/h)
	W × H × D (mm)				
HACH2412-4V	592 × 287 × 292	4V ABS Frame Header 25mm	4.5~5.0	8.0~8.5	230@1800

注：1、若遇规格、结构变更，以本公司提供的最新数据为准；有关更新内容请关注本公司网站。
2、本公司接受非表上规格过滤器产品的订货。
Note: 1. In case of specifications, structural changes, HEFIL will provide up-to-date data on website: www.hefil.com.
2. HEFIL makes various other models of HACH filter not listed the above table. Please consult with us if you need.

性能特点 Features

- ◆ 采用颗粒活性炭经过特殊化学配方处理
- ◆ 吸附能力强、去除效率高，性能可靠
- ◆ 安装与维护方便，通用性强
- ◆ 框体材料可选用镀锌钢板、不锈钢板或铝合金
- ◆ Using activated charcoal particles with a special chemical formula treatment
- ◆ Reliable performance with high adsorption capacity and removal efficiency
- ◆ Great versatility, easy installation and maintenance
- ◆ Frame can be made of galvanized steel sheet, stainless steel sheet or aluminum alloy

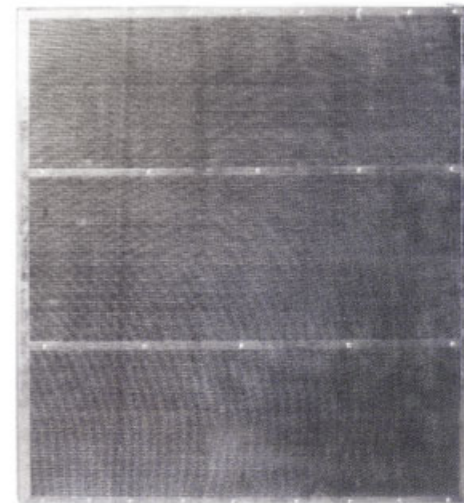
应用 Application

- ◆ 可广泛用于各种新风净化和废气排放等通风系统，去除空气中的异味(恶臭)和有害气体
- ◆ 可根据实际需要多种特制活性炭材料，如挥发性有机化合物，酸性、碱性气体，甲醛，汞蒸气，放射性气体
- ◆ Can be used in a variety of fresh air purification, exhaust emissions or other ventilation systems, eliminate the odor (smell) and harmful gases in air
- ◆ A variety of special activated charcoal materials can be provided according to the actual needs, such as elimination of acid gas, alkaline gas, formaldehyde, mercury vapor as well as radioactive gases

常用规格 Common Specifications

型号 Model	外形尺寸 Dimensions	去除效率 Removal Efficiency (%)	活性炭含量 Charcoal Content (kg)	压降@风量 Pressure Drop (Pa) @ Air Flow (m³/h)
	W × H × D (mm)			
HACF-242401	595 × 595 × 21	90	4	140@900
HACF-122401	290 × 595 × 21		2	140@450
HACF-242402	595 × 595 × 45	95	8	320@900
HACF-122402	290 × 595 × 45		4	320@450

注：1、若遇规格、结构变更，以本公司提供的最新数据为准；有关更新内容请关注本公司网站。
2、本公司接受非表上规格过滤器产品的订货。
Note: 1. In case of specifications, structural changes, HEFIL will provide up-to-date data on website: www.hefil.com.
2. HEFIL makes various other models of HACF filter not listed the above table. Please consult with us if you need.



性能特点 Features

- ◆ 采用颗粒活性炭经过特殊化学配方处理
- ◆ 吸附容量大、去除效率高，性能可靠
- ◆ 安装与维护方便
- ◆ 框体材料可选用镀锌钢板或不锈钢板
- ◆ Using activated charcoal particles with a special chemical formula treatment
- ◆ Reliable performance with high adsorption capacity and removal efficiency
- ◆ Easy installation and maintenance
- ◆ Frame can be made of galvanized steel sheet or stainless steel sheet



应用 Application

- ◆ 适用于工业通风系统，去除空气中的异味(恶臭)和有害气体
- ◆ 可根据实际需要多种特制活性炭材料，如挥发性有机化合物，酸性、碱性气体，甲醛，汞蒸气，放射性气体
- ◆ Suitable for industrial ventilation systems, eliminate the odor (smell) and harmful gases in air
- ◆ A variety of special activated charcoal materials can be provided according to the actual needs, such as elimination of acid gas, alkaline gas, formaldehyde, mercury vapor as well as radioactive gases

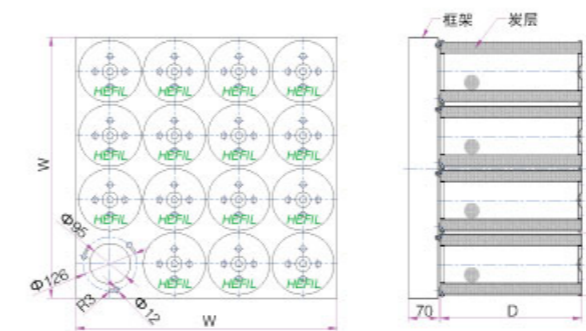
常用规格 Common Specifications

型号 Model	外形尺寸 Dimensions	去除效率 Removal Efficiency (%)	活性炭含量 Charcoal Content (kg)	压降@风量 Pressure Drop (Pa) @ Air Flow (m³/h)
	W × H × D (mm)			
HACB-242412-4V	610 × 610 × 292	95	18	140@3600
HACB-241212-4V	610 × 305 × 292		8.5	150@1800
HACB-122412-2V	305 × 610 × 292		8.5	150@1800
HACB-121212-2V	305 × 305 × 292		4.2	160@900

注：1、若遇规格、结构变更，以本公司提供的最新数据为准；有关更新内容请关注本公司网站。
2、本公司接受非表上规格过滤器产品的订货。
Note: 1. In case of specifications, structural changes, HEFIL will provide up-to-date data on website: www.hefil.com.
2. HEFIL makes various other models of HACB filter not listed the above table. Please consult with us if you need.

性能特点 Features

- ◆ 采用颗粒活性炭经过特殊化学配方处理
- ◆ 吸附能力强、去除效率高，性能可靠
- ◆ 安装与维护方便，运行费用低
- ◆ 可更换吸附媒介，金属壳体可重复使用
- ◆ 可提供框架，根据所需的气体处理量拼装组合使用
- ◆ 滤筒材料可选用镀锌钢板或不锈钢
- ◆ 框架材料可选用冷轧钢板喷塑或不锈钢
- ◆ Using activated charcoal particles with a special chemical formula treatment
- ◆ Reliable performance with high adsorption capacity and removal efficiency
- ◆ Easy installation and maintenance, Low operating costs
- ◆ Adsorption media can be replaced, metal shell can be reused
- ◆ Provide holders that can be assembled to a combination according to the gas processing capacity needed
- ◆ The material of cylinder could be galvanized steel or stainless steel
- ◆ The material of holder could be cold-rolled steel with electrostatic plastic spray or stainless steel



应用 Application

- ◆ 专为商用或工业用中央空调和集中通风系统设计，清除空气中的异味(恶臭)和有害气体
- ◆ 可根据实际需要多种特制活性炭材料，如挥发性有机化合物，酸性、碱性气体，甲醛，汞蒸气，放射性气体
- ◆ Exclusively designed for commercial or industrial central air conditioning and central ventilation system, eliminate the odor (smell) and harmful gases in air
- ◆ A variety of special activated charcoal materials can be provided according to the actual needs, such as elimination of acid gas, alkaline gas, formaldehyde, mercury vapor as well as radioactive gases



常用规格 Common Specifications

炭筒型号 Filter Model	炭筒尺寸 Cylinder Dimensions (mm)	炭筒尺寸 Cylinder Dimensions (mm)	组合单元尺寸 Modular Dimensions (mm)			炭筒数 No. of Cylinder	活性炭含量 Charcoal Content (kg)	去除效率 Removal Efficiency (%)	压降@风量 Pressure Drop (Pa)@ Air Flow (m³/h)
			W	H	D+70				
HACT-330	Φ145 × 330	HTF16	610	610	403	16	24	90	135@3600
		HTF12	508	610		12	18		135@2700
		HTF08	305	610		8	12		135@1800
		HTF04	305	305		4	6		135@900
HACT-405	Φ145 × 405	HTF16	610	610	478	16	28.8	95	110@3600
		HTF12	508	610		12	21.6		110@2700
		HTF08	305	610		8	14.4		110@1800
		HTF04	305	305		4	7.2		110@900
HACT-480	Φ145 × 480	HTF16	610	610	553	16	35.2	95	90@3600
		HTF12	508	610		12	26.4		90@2700
		HTF08	305	610		8	17.6		90@1800
		HTF04	305	305		4	8.8		90@900
HACT-600	Φ145 × 600	HTF16	610	610	673	16	43.2	95	70@3600
		HTF12	508	610		12	32.4		70@2700
		HTF08	305	610		8	21.6		70@1800
		HTF04	305	305		4	10.8		70@900

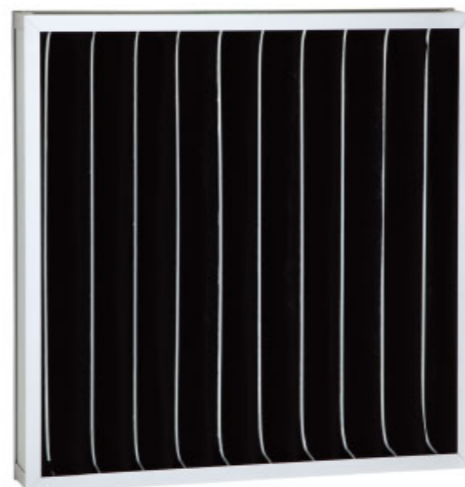
注：1、若遇规格、结构变更，以本公司提供的最新数据为准；有关更新内容请关注本公司网站。
2、本公司接受非表上规格过滤器产品的订货。
Note: 1. In case of specifications, structural changes, HEFIL will provide up-to-date data on website: www.hefil.com.
2. HEFIL makes various other models of HACT filter not listed the above table. Please consult with us if you need.

性能特点 Features

- ◆ 采用活性炭浸泡聚酯无纺布制成，有效去除空气中各种异味
- ◆ 吸附能力强、去除效率高，性能可靠
- ◆ 安装与维护方便，重量轻，通用性强
- ◆ 框体材料可选用铝合金、镀锌钢板或不锈钢板
- ◆ Made of polyester non-woven soaked in activated charcoal, effectively remove a variety of odors in the air
- ◆ Reliable performance with high adsorption capacity and removal efficiency
- ◆ Great versatility, easy installation and maintenance
- ◆ Frame can be made of aluminum alloy, galvanized steel sheet or stainless steel sheet

应用 Application

- ◆ 可广泛用于各种空调通风系统，同时兼备除尘和除臭功能，有效改善室内空气品质
- ◆ Can be used in a variety of air conditioning and ventilation systems. Both play the role of dust collector and deodorizing. Effectively improve the quality of indoor air.



常用规格 Common Specifications

型号 Model	外形尺寸 Dimensions	额定风量 Rated Air Flow (m³/h)	初始压降 Initial Pressure Drop (Pa)
	W × H × D (mm)		
HACP-24 × 24 × 2	595 × 595 × 45	3600	70
HACP-12 × 24 × 2	290 × 595 × 45	1800	
HACP-24 × 24 × 4	595 × 595 × 95	3600	45
HACP-12 × 24 × 4	290 × 595 × 95	1800	
HACP-20 × 24 × 2	493 × 595 × 45	3000	70
HACP-20 × 20 × 2	493 × 493 × 45	2500	
HACP-12 × 20 × 2	290 × 493 × 45	1500	
HACP-20 × 24 × 4	493 × 595 × 95	3000	45
HACP-20 × 20 × 4	493 × 493 × 95	2500	
HACP-12 × 20 × 4	290 × 493 × 95	1500	

注：1、若遇规格、结构变更，以本公司提供的最新数据为准；有关更新内容请关注本公司网站。
2、本公司接受非表上规格过滤网产品的订货。
Note: 1. In case of specifications, structural changes, HEFIL will provide up-to-date data on website: www.hefil.com.
2. HEFIL makes various other models of HACP filter not listed the above table. Please consult with us if you need.

性能特点 Features

- ◆ 过滤效率等级G3~F5可供选择
- ◆ 采用活性炭纤维与无纺布复合制成，有效去除空气中各种异味
- ◆ 吸附能力强、去除效率高，性能可靠
- ◆ 安装与维护方便，重量轻，通用性强
- ◆ 可带镀锌框、铝合金框、塑料框或不锈钢框
- ◆ Filtration efficiency rating G3~F5 is available for selection
- ◆ Made of polyester non-woven soaked in activated charcoal, enhanced with non-woven composite, effectively remove a variety of odors in the air
- ◆ Reliable performance with high adsorption capacity and removal efficiency
- ◆ Great versatility, easy installation and maintenance
- ◆ The filter can be with the frame made up of aluminum alloy, galvanized steel, stainless steel or plastic

应用 Application

- ◆ 可广泛用于各种空调通风系统，同时兼备除尘和除臭功能，有效改善室内空气品质
- ◆ Can be used in a variety of air conditioning and ventilation systems. Both play the role of dust collector and deodorizing. Effectively improve the quality of indoor air.



常用规格 Common Specifications

型号 Model	外形尺寸 Dimensions	袋数 No. of Pockets	过滤面积 Media Area (m²)	初始压降 Initial Pressure Drop (Pa)		
	W × H × D (mm)			G3	G4	F5
HACD-24 × 24 × 14-6P	592 × 592 × 381	6	3.3	31@3400	49@3400	84@3400
HACD-20 × 24 × 14-5P	490 × 592 × 381	5	2.7	31@2900	49@2900	84@2900
HACD-12 × 24 × 14-3P	287 × 592 × 381	3	1.6	31@1700	49@1700	84@1700
HACD-24 × 24 × 22-6P	592 × 592 × 558	6	4.6	22@3400	35@3800	60@3400
HACD-20 × 24 × 22-5P	490 × 592 × 558	5	4.1	22@2900	35@3200	60@2900
HACD-12 × 24 × 22-3P	287 × 592 × 558	3	2.3	22@1700	35@1900	60@1700

注：1、若遇规格、结构变更，以本公司提供的最新数据为准；有关更新内容请关注本公司网站。
2、本公司接受非表上规格过滤网产品的订货。
Note: 1. In case of specifications, structural changes, HEFIL will provide up-to-date data on website: www.hefil.com.
2. HEFIL makes various other models of HACD filter not listed the above table. Please consult with us if you need.

性能特点 Features

- ◆采用活性炭颗粒与超细合成纤维复合材料，有效去除空气中有害物质
 - ◆过滤面积大、吸附能力强、去除效率高，性能可靠
 - ◆安装与维护方便，重量轻
 - ◆ABS塑料框便于环保处理
- ◆Using carbon particles and ultrafine synthetic fibres composite material, effectively removing harmful substances in the air
 - ◆Larger filter area, reliable performance with high adsorption capacity and removal efficiency
 - ◆Light weight, easy installation and maintenance
 - ◆Frame is made of ABS, easy to dispose in accordance with environmental protection requirements



应用 Application

- ◆适用于中央空调通风系统，消除低浓度有机污染物、二氧化硫、二氧化氮，同时兼备除尘和除污染气体功能
- ◆Suitable for central air conditioning and ventilation systems, to eliminate light concentrations of organic pollutants, sulfur dioxide, nitrogen dioxide, with the function of removing of dust and gas contamination at the same time.

常用规格 Common Specifications

型号 Model	外形尺寸 Dimensions	结构 Structural Style	框体 Frame	过滤面积 Media Area (m ²)	额定风量 Rated Air Flow (m ³ /h)	初始压降 Initial Pressure Drop(Pa)
	W×H×D (mm)					
HACV1212-2VF	287×287×292	287 单凸Header	2V 塑框ABS	2.1	800	80
HACV1220-2VF	287×490×292			3.8	1200	
HACV1224-2VF	287×592×292			4.7	1600	
HACV2012-3VF	490×287×292	490 单凸Header	3V 塑框ABS	3.2	1100	
HACV2020-3VF	490×490×292			5.8	1900	
HACV2024-3VF	490×592×292			7.2	2400	
HACV2412-3VF	592×287×292	592 单凸Header	3V 塑框ABS	3.2	1100	
HACV2420-3VF	592×490×292			5.8	1900	
HACV2424-3VF	592×592×292			7.2	2400	
HACV2412-4VF	592×287×292		4V 塑框ABS	3.2	1600	
HACV2420-4VF	592×490×292			7.7	2500	
HACV2424-4VF	592×592×292			9.4	3200	
HACV2412-5VF	592×287×292	592 单凸Header	5V 塑框ABS	5.2	1800	
HACV2420-5VF	592×490×292			9.5	3200	
HACV2424-5VF	592×592×292			11.7	3900	
HACV1212-2V	305×305×292	610 箱型Box	2V 塑框ABS	2.7	850	
HACV1224-2V	305×610×292		5.4	1700		
HACV2412-5V	610×305×292		5V 塑框ABS	6.7	2100	
HACV2424-5V	610×610×292		13.5	4200		

注：1、若遇规格、结构变更，以本公司提供的最新数据为准；有关更新内容请关注本公司网站。
2、本公司接受非表上规格过滤器产品的订货。
Note: 1. In case of specifications, structural changes, HEFIL will provide up-to-date data on website: www.hefil.com.
2. HEFIL makes various other models of HACV filter not listed the above table. Please consult with us if you need.

空气过滤器效率规格比较
Filter Efficiency and Classifications

